

1st Year Retention by Colleges with Pell and HOPE Eligibility Status

IPEDS First Time Freshman Cohorts for Fall 2001, 2003, 2004, and 2005



**Office of Strategic Research
and Analysis**

November 13, 2006

Georgia Southern University
Office of Strategic Research and Analysis (OSRA)
September 8, 2006

Project Request: IPEDS First Time Freshman Retention by Georgia Southern College and by Pell and Hope Eligibility Status.

Requested by: Dr. Bruce Grube, President

Project Abstract: Data were requested on 1st year retention of the Fall 2001, 2003, 2004, and 2005 IPEDS First Time Freshman Cohorts. The intent of this analysis was to provide characteristics on first year students who returned to the University.

Methodology: The Student Information Reporting System (SIRS) files were used to identify the cohorts and determine 1st year retention. The Banner table faismgr.rpratrm was used to determine students awarded Pell Grants in their first year. The table gasis.zhrhacc was used to determine those students eligible for HOPE aid at the end of their first year. Retention rates were provided for the University overall and for each of the colleges by major.

Note: An IPEDS First Time Freshman is a degree-seeking undergraduate who enters college for the first time in Fall Term or who has graduated from high school within the same calendar year of that Fall Term. First time summer students are also included if they are enrolled in the Fall Term.

Project Timeframe: September – November, 2006

Project Costs: staff time, plus copies of project info

Project Contact: Dr. Jayne Perkins Brown, Director, OSRA

Project Support: Office of Strategic Research and Analysis

- Dr. Jayne Perkins Brown, Director
- Mr. Paul Wilver, Assistant Director, Decision Support Systems

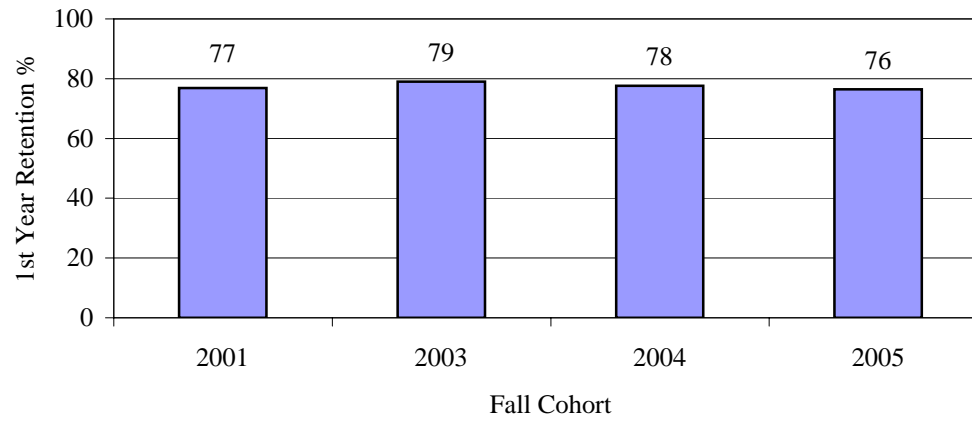
Project Source of Copies: Office of Strategic Research and Analysis
Georgia Southern University
P.O. Box 8126
Statesboro, GA 30460-8126
(912) 681-5218, (912) 871-1403-fax

Distribution: preliminary report provided at Administrative Workshop, October 2-3, 2006; final report provided to Dr. Bruce Grube, President; Dr. Linda Bleicken, Provost; Dr. Teresa Thompson, VP-SAEM for distribution to appropriate administrative contacts

File Location: U:\Departments\President\President's Workshop Admin Retreat\Fall 2006\Documents\ReportCardRetention_abstract_111306.doc

Georgia Southern University First Time Freshman 1st Year Retention

Georgia Southern University

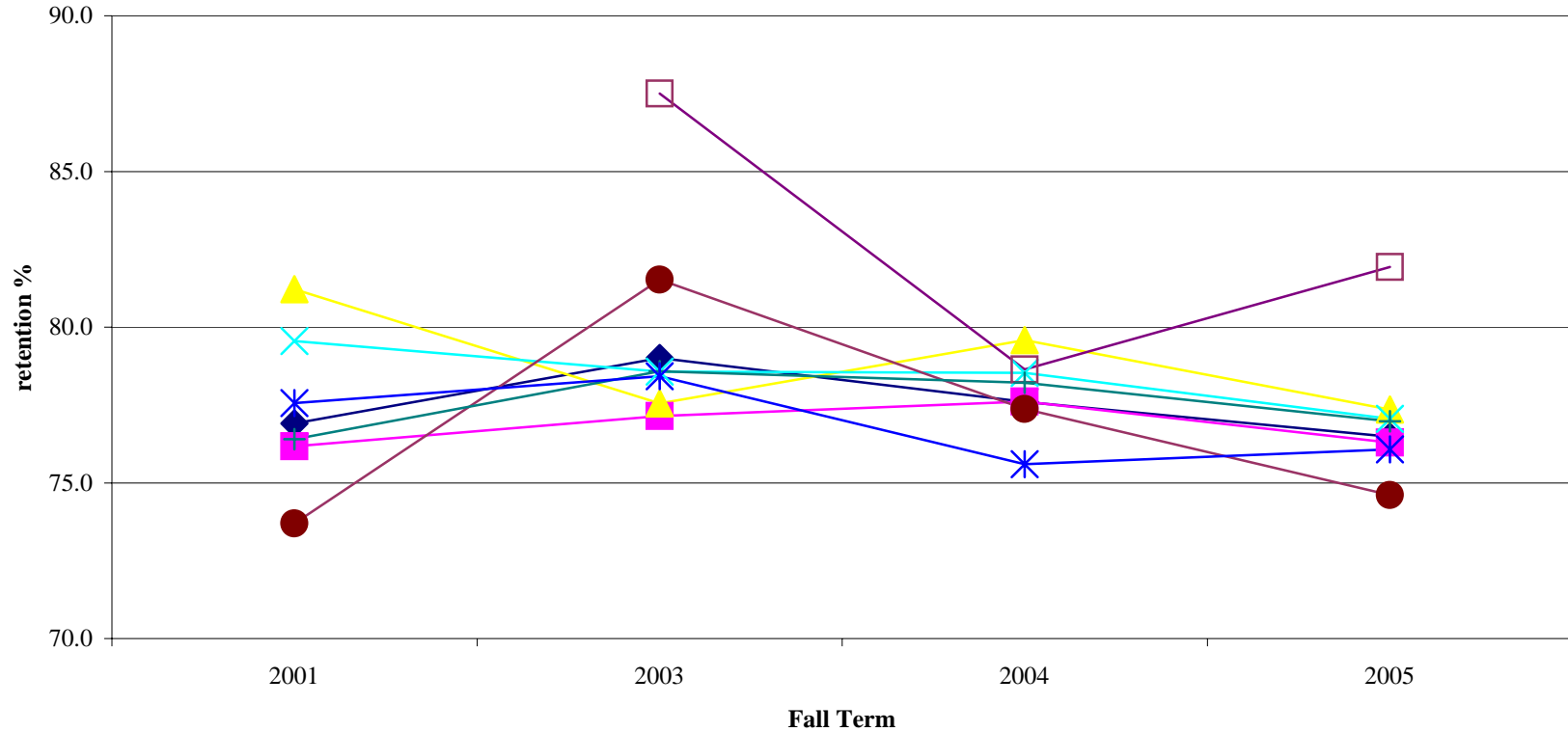


College/Major	2001			2003			2004			2005		
	Cohort	Retention		Cohort	Retention		Cohort	Retention		Cohort	Retention	
		n	%		n	%		n	%		n	%
Georgia Southern University	2,633	2,025	76.9	2,735	2,161	79.0	2,983	2,315	77.6	3,125	2,390	76.48

Cohorts are IPEDS First Time, Full Time, Degree-seeking Freshmen.

Georgia Southern University First Time Freshman 1st Year Retention

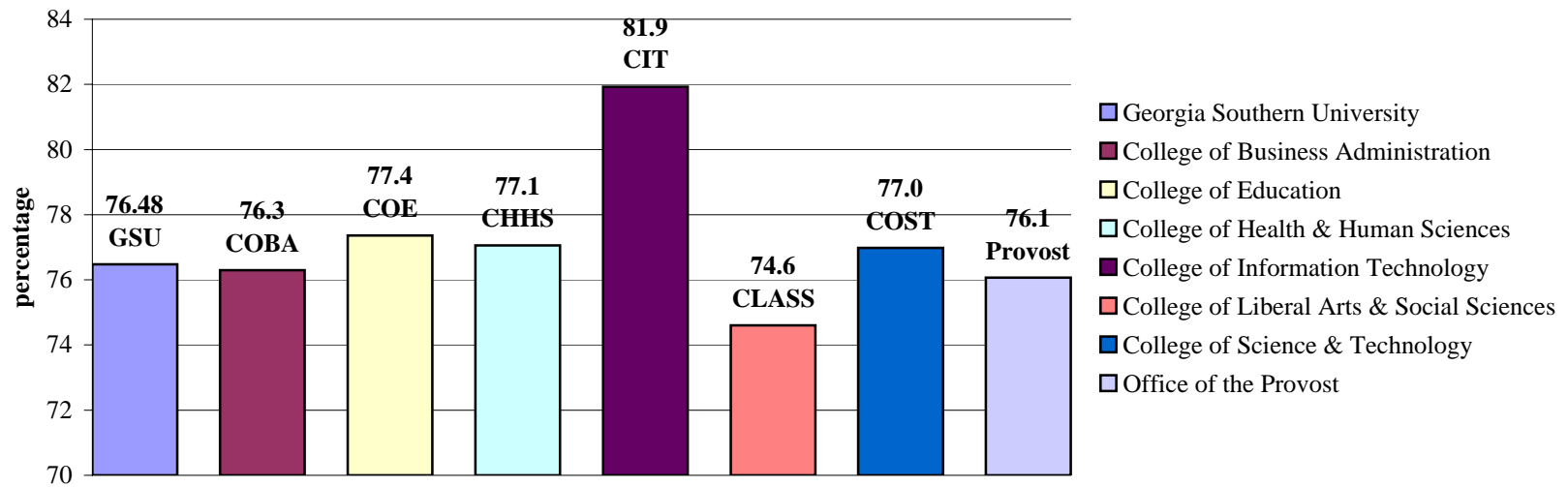
Comparison of Retention Rates



College	2001			2003			2004			2005		
	Cohort	n	Retention %	Cohort	n	Retention %	Cohort	n	Retention %	Cohort	n	Retention %
Georgia Southern University	2,633	2,025	76.9	2,735	2,161	79.0	2,983	2,315	77.6	3,125	2,390	76.48
College of Business Administration	491	374	76.2	420	324	77.1	478	371	77.6	578	441	76.3
College of Education	181	147	81.2	245	190	77.6	240	191	79.6	265	205	77.4
College of Health & Human Sciences	269	214	79.6	378	297	78.6	382	300	78.5	449	346	77.1
College of Information Technology	established 2003			96	84	87.5	103	81	78.6	83	68	81.9
College of Liberal Arts & Social Sciences	384	283	73.7	433	353	81.5	473	366	77.4	508	379	74.6
College of Science & Technology	644	492	76.4	593	466	78.6	684	535	78.2	682	525	77.0
Office of the Provost	664	515	77.6	570	447	78.4	623	471	75.6	560	426	76.1

Cohorts are IPEDS First Time, Full Time, Degree-seeking Freshmen.

Georgia Southern University First Time Freshman 1st Year Retention

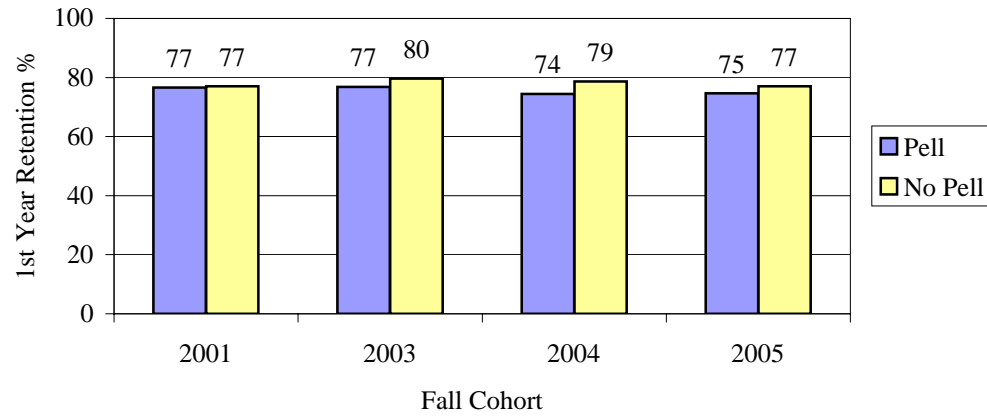


College	Cohort	2005 Retention	
		n	%
Georgia Southern University	3,125	2,390	76.48
College of Business Administration	578	441	76.3
College of Education	265	205	77.4
College of Health & Human Sciences	449	346	77.1
College of Information Technology	83	68	81.9
College of Liberal Arts & Social Sciences	508	379	74.6
College of Science & Technology	682	525	77.0
Office of the Provost	560	426	76.1

Cohorts are IPEDS First Time, Full Time, Degree-seeking Freshmen.

Georgia Southern University First Time Freshman 1st Year Retention

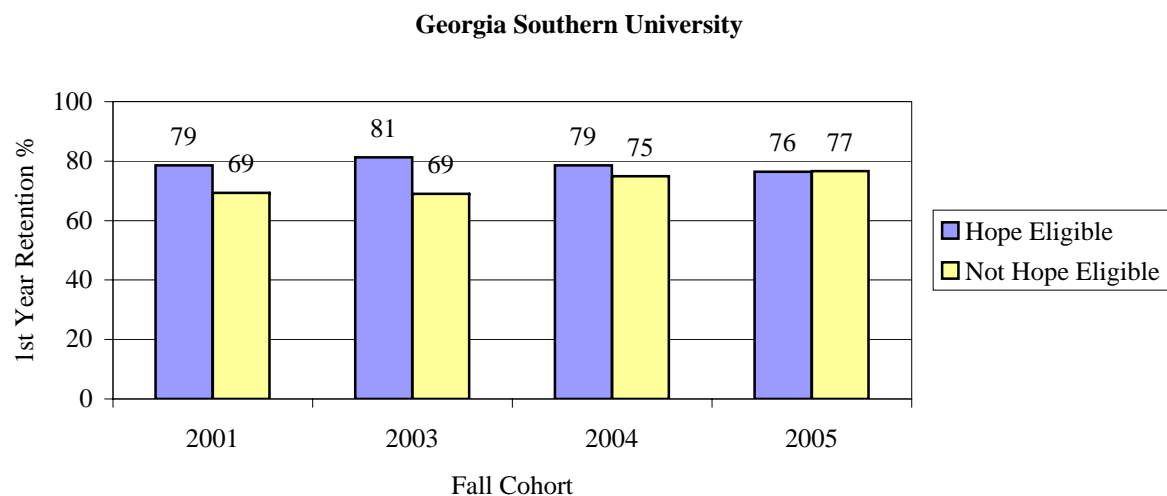
Georgia Southern University



Pell Status	2001			2003			2004			2005		
	Cohort	Retention		Cohort	Retention		Cohort	Retention		Cohort	Retention	
Georgia Southern University	2,633	2,025	76.9	2,735	2,161	79.0	2,983	2,315	77.6	3,125	2,390	76.48
Pell	616	472	76.6	639	491	76.8	748	557	74.5	685	511	74.6
No Pell	2,017	1,553	77.0	2,096	1,670	79.7	2,235	1,758	78.7	2,440	1,879	77.0

Cohorts are IPEDS First Time, Full Time, Degree-seeking Freshmen.

Georgia Southern University First Time Freshman 1st Year Retention

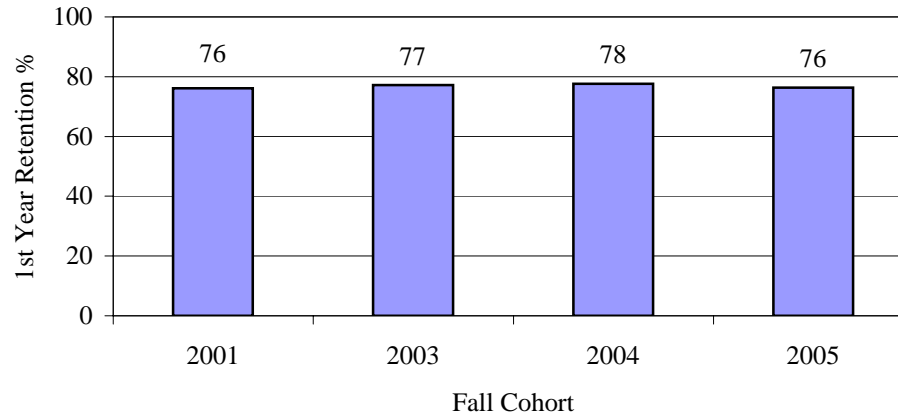


	2001			2003			2004			2005		
	Cohort	n	%	Cohort	n	%	Cohort	n	%	Cohort	n	%
Georgia Southern University	2,633	2,025	76.9	2,735	2,161	79.0	2,983	2,315	77.6	3,125	2,390	76.48
Hope Eligible	2,150	1,690	78.6	2,239	1,819	81.2	2,194	1,724	78.6	2,282	1,744	76.4
Not Hope Eligible	483	335	69.4	496	342	69.0	789	591	74.9	843	646	76.6

Cohorts are IPEDS First Time, Full Time, Degree-seeking Freshmen.

Georgia Southern University
First Time Freshman 1st Year Retention By College/Major/Pell and HOPE Eligibility

College of Business Administration

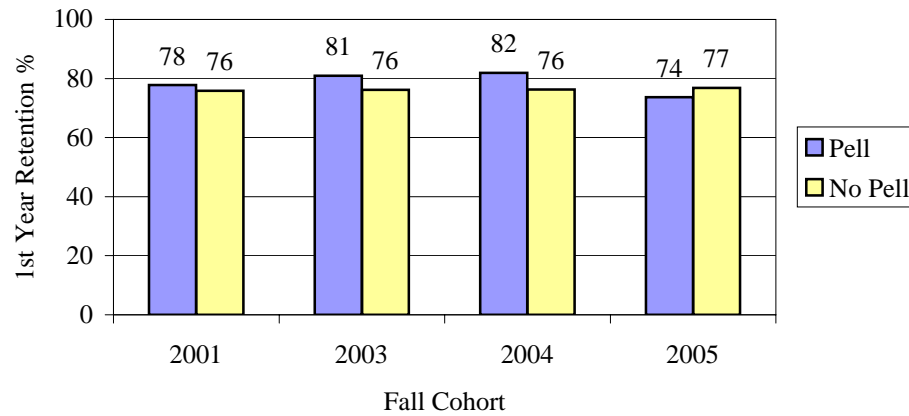


College/Major	2001			2003			2004			2005		
	Cohort	n	%	Cohort	n	%	Cohort	n	%	Cohort	n	%
College of Business Administration	491	374	76.2	420	324	77.1	478	371	77.6	578	441	76.3
Accounting	1	1	100.0	0	0		0	0		0	0	
Accounting-Pre-Law	1	1	100.0	0	0		0	0		0	0	
Finance	0	0		1	0	0.0	0	0		0	0	
Information Systems	0	0		1	0	0.0	3	1	33.3	0	0	
Information Technology	43	27	62.8	0	0		0	0		0	0	
Logis/Intermodal Transport	0	0		1	1	100.0	0	0		0	0	
Management	1	1	100.0	0	0		0	0		0	0	
Marketing/Fash Merchandising	0	0		1	1	100.0	0	0		0	0	
Marketing/Sales & Sales Mgt	0	0		0	0		0	0		1	1	100.0
Pre-Bus Info/Systems	0	0		9	8	88.9	3	2	66.7	0	0	
Pre-Business	445	344	77.3	407	314	77.1	472	368	78.0	577	440	76.3

Cohorts are IPEDS First Time, Full Time, Degree-seeking Freshmen.

Georgia Southern University
First Time Freshman 1st Year Retention By College/Major/Pell and HOPE Eligibility

College of Business Administration

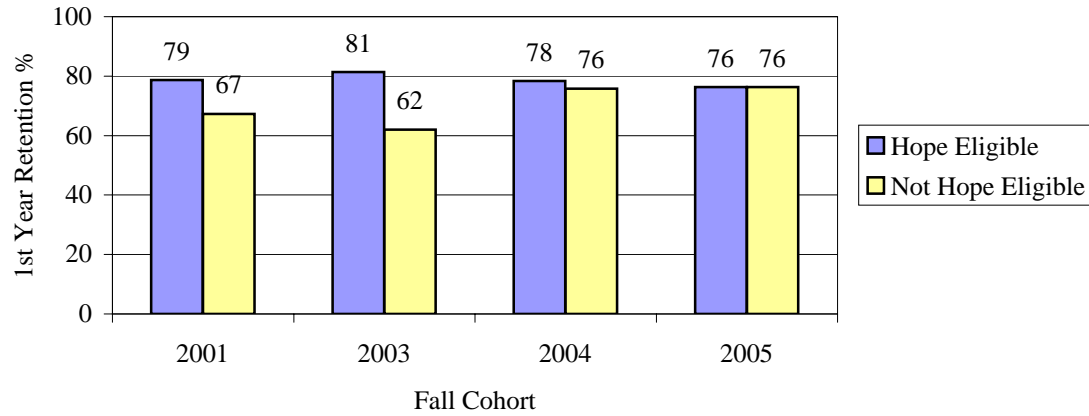


College/Pell Status	2001			2003			2004			2005		
	Cohort	n	%	Cohort	n	%	Cohort	n	%	Cohort	n	%
College of Business Administration	491	374	76.2	420	324	77.1	478	371	77.6	578	441	76.3
Pell	90	70	77.8	84	68	81.0	116	95	81.9	95	70	73.7
No Pell	401	304	75.8	336	256	76.2	362	276	76.2	483	371	76.8

Cohorts are IPEDS First Time, Full Time, Degree-seeking Freshmen.

Georgia Southern University
First Time Freshman 1st Year Retention By College/Major/Pell and HOPE Eligibility

College of Business Administration

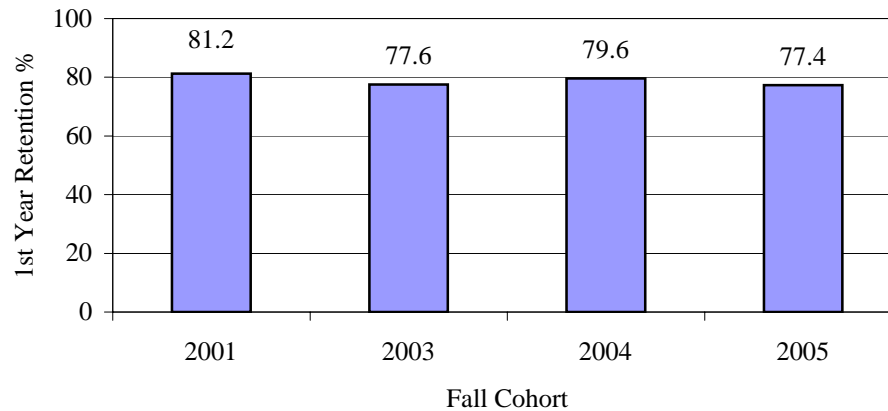


College/Hope Eligibility	2001			2003			2004			2005		
	Cohort	Retention		Cohort	Retention		Cohort	Retention		Cohort	Retention	
		n	%		n	%		n	%		n	%
College of Business Administration	491	374	76.2	420	324	77.1	478	371	77.6	578	441	76.3
Hope Eligible	384	302	78.6	328	267	81.4	342	268	78.4	409	312	76.3
Not Hope Eligible	107	72	67.3	92	57	62.0	136	103	75.7	169	129	76.3

Cohorts are IPEDS First Time, Full Time, Degree-seeking Freshmen.

Georgia Southern University
First Time Freshman 1st Year Retention By College/Major/Pell and HOPE Eligibility

College of Education



College/Major	2001			2003			2004			2005		
	Cohort	n	Retention %	Cohort	n	Retention %	Cohort	n	Retention %	Cohort	n	Retention %
College of Education	181	147	81.2	245	190	77.6	240	191	79.6	265	205	77.4
Art Education	1	1	100.0	1	1	100.0	0	0		0	0	
Early Childhood Education	7	6	85.7	3	3	100.0	6	6	100.0	1	0	0.0
Health & Physical Education	1	1	100.0	0	0		1	1	100.0	1	0	0.0
Middle Grades Education	2	2	100.0	1	1	100.0	0	0		0	0	
Pre Ed Teach FieldChemistry	0	0		0	0		0	0		1	1	100.0
Pre-Ed Teaching Field-Biology	0	0		3	3	100.0	5	4	80.0	3	2	66.7
Pre-Ed Art Education	5	3	60.0	4	4	100.0	8	7	87.5	2	1	50.0
Pre-Ed Business Education	0	0		3	3	100.0	2	2	100.0	7	7	100.0
Pre-Ed Early Child ED/BRC	0	0		0	0		0	0		5	4	80.0
Pre-Ed Early Childhood Ed	60	48	80.0	103	89	86.4	100	80	80.0	122	94	77.0
Pre-Ed English Education	5	5	100.0	20	14	70.0	20	17	85.0	9	9	100.0
Pre-Ed Fam/Consumer Sciences	0	0		1	1	100.0	3	3	100.0	3	3	100.0
Pre-Ed Health & Phys-Ed	12	9	75.0	11	6	54.5	10	6	60.0	9	1	11.1
Pre-Ed Mathematics Ed	7	7	100.0	21	17	81.0	13	10	76.9	21	18	85.7
Pre-Ed Middle Grades Ed	13	10	76.9	14	10	71.4	15	13	86.7	21	17	81.0
Pre-Ed Science Ed/Biology	1	0	0.0	0	0		0	0		0	0	
Pre-Ed Science Education	2	2	100.0	0	0		0	0		0	0	
Pre-Ed Social Science Ed	5	5	100.0	0	0		0	0		0	0	

Georgia Southern University
First Time Freshman 1st Year Retention By College/Major/Pell and HOPE Eligibility

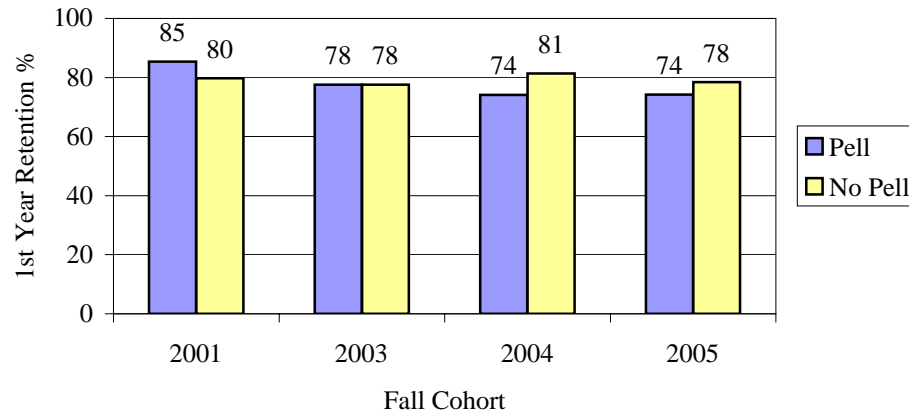
continued from previous page

College/Major	2001			2003			2004			2005		
	Cohort	Retention		Cohort	Retention		Cohort	Retention		Cohort	Retention	
		n	%		n	%		n	%		n	%
College of Education	181	147	81.2	245	190	77.6	240	191	79.6	265	205	77.4
Pre-Ed Special Education	17	13	76.5	12	7	58.3	10	8	80.0	19	16	84.2
Pre-Ed Teach Field-Geography	0	0		1	0	0.0	1	0	0.0	0	0	
Pre-Ed Teach Field-Poli Sci	0	0		3	3	100.0	1	1	100.0	1	0	0.0
Pre-Ed Teach Fld-French	0	0		2	0	0.0	1	0	0.0	1	1	100.0
Pre-Ed Teach Fld-German	0	0		0	0		1	0	0.0	0	0	
Pre-Ed Teach Fld-Spanish	3	3	100.0	2	1	50.0	0	0		7	6	85.7
Pre-Ed Teach Fld-Tech Ed	2	2	100.0	1	0	0.0	4	3	75.0	0	0	
Pre-Ed Teaching Field Physics	0	0		1	1	100.0	1	1	100.0	0	0	
Pre-Ed Teaching Field-History	5	4	80.0	15	11	73.3	24	20	83.3	22	18	81.8
Pre-Education	25	20	80.0	13	7	53.8	13	9	69.2	10	7	70.0
Spanish	0	0		1	1	100.0	0	0		0	0	
Special Education	0	0		1	1	100.0	0	0		0	0	
Tch Field-Mathematics Ed	1	1	100.0	2	1	50.0	0	0		0	0	
Teach Field-Business Education	1	1	100.0	0	0		0	0		0	0	
Teach Fld-Technology Ed	1	0	0.0	1	1	100.0	0	0		0	0	
Teaching Field-Biology	1	1	100.0	0	0		0	0		0	0	
Teaching Field-English	2	1	50.0	3	3	100.0	0	0		0	0	
Teaching Field-Geography	0	0		1	1	100.0	0	0		0	0	
Teaching Field-History	2	2	100.0	1	0	0.0	1	0	0.0	0	0	

Cohorts are IPEDS First Time, Full Time, Degree-seeking Freshmen.

Georgia Southern University
First Time Freshman 1st Year Retention By College/Major/Pell and HOPE Eligibility

College of Education

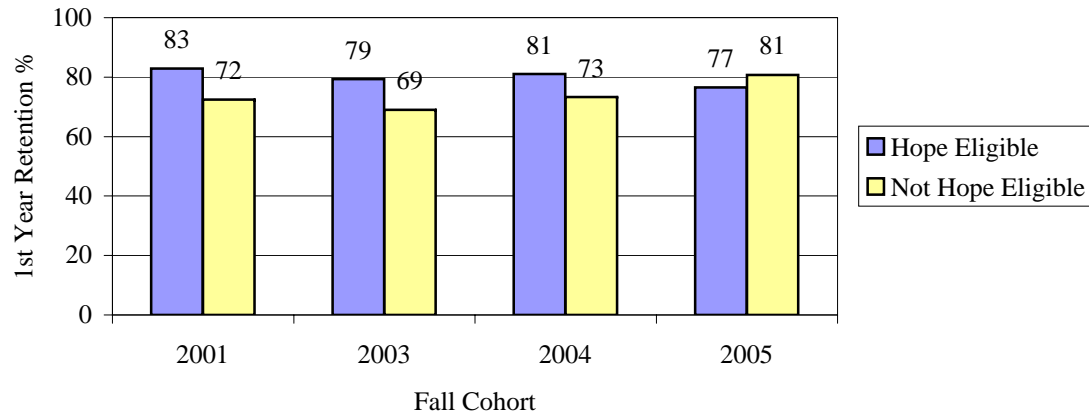


College/Pell Status	2001			2003			2004			2005		
	Cohort	n	%	Cohort	n	%	Cohort	n	%	Cohort	n	%
College of Education	181	147	81.2	245	190	77.6	240	191	79.6	265	205	77.4
Pell	48	41	85.4	58	45	77.6	58	43	74.1	66	49	74.2
No Pell	133	106	79.7	187	145	77.5	182	148	81.3	199	156	78.4

Cohorts are IPEDS First Time, Full Time, Degree-seeking Freshmen.

Georgia Southern University
First Time Freshman 1st Year Retention By College/Major/Pell and HOPE Eligibility

College of Education

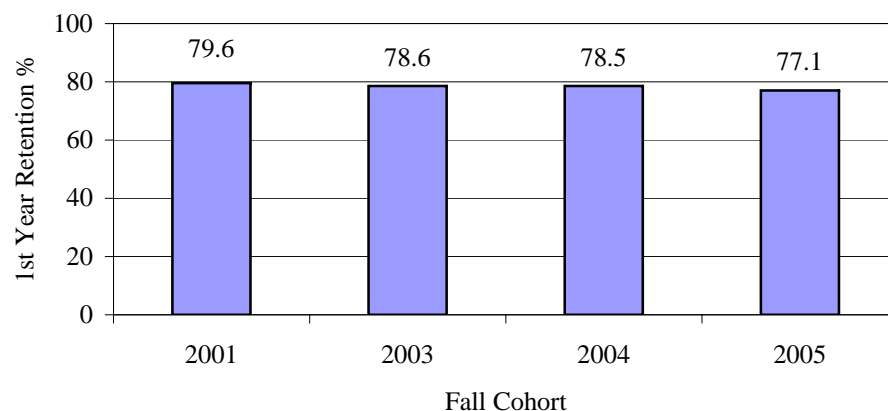


College/Hope Eligibility	2001			2003			2004			2005		
	Cohort	Retention		Cohort	Retention		Cohort	Retention		Cohort	Retention	
		n	%		n	%		n	%		n	%
College of Education	181	147	81.2	245	190	77.6	240	191	79.6	265	205	77.4
Hope Eligible	152	126	82.9	203	161	79.3	195	158	81.0	213	163	76.5
Not Hope Eligible	29	21	72.4	42	29	69.0	45	33	73.3	52	42	80.8

Cohorts are IPEDS First Time, Full Time, Degree-seeking Freshmen.

Georgia Southern University
First Time Freshman 1st Year Retention By College/Major/Pell and HOPE Eligibility

College of Health & Human Sciences



College/Major	2001			2003			2004			2005		
	Cohort	n	Retention %	Cohort	n	Retention %	Cohort	n	Retention %	Cohort	n	Retention %
College of Health & Human Sciences	269	214	79.6	378	297	78.6	382	300	78.5	449	346	77.1
Child/Fam Development	6	6	100.0	2	2	100.0	0	0		2	2	100.0
Community Health	1	1	100.0	0	0		0	0		0	0	
Exercise Science	31	25	80.6	13	11	84.6	0	0		1	1	100.0
Fashion Merch & Apparel Design	16	13	81.3	24	19	79.2	31	23	74.2	30	22	73.3
Health Behavior	2	2	100.0	0	0		1	1	100.0	0	0	
Hotel/Restr Management	4	4	100.0	10	8	80.0	19	15	78.9	16	11	68.8
Interior Design	25	20	80.0	10	6	60.0	2	2	100.0	3	3	100.0
Medical Technology	4	3	75.0	3	2	66.7	3	3	100.0	2	1	50.0
Nursing	0	0		0	0		0	0		3	3	100.0
Nutrition/Food Sci	5	5	100.0	6	5	83.3	4	3	75.0	0	0	
Nutrition/Food Sci/Dietetics	0	0		1	1	100.0	4	2	50.0	6	4	66.7
Nutrition/Food Sci/Hospitality	1	0	0.0	0	0		0	0		0	0	
Pre-Child/Fam Development	0	0		1	1	100.0	1	1	100.0	2	2	100.0

Georgia Southern University
First Time Freshman 1st Year Retention By College/Major/Pell and HOPE Eligibility

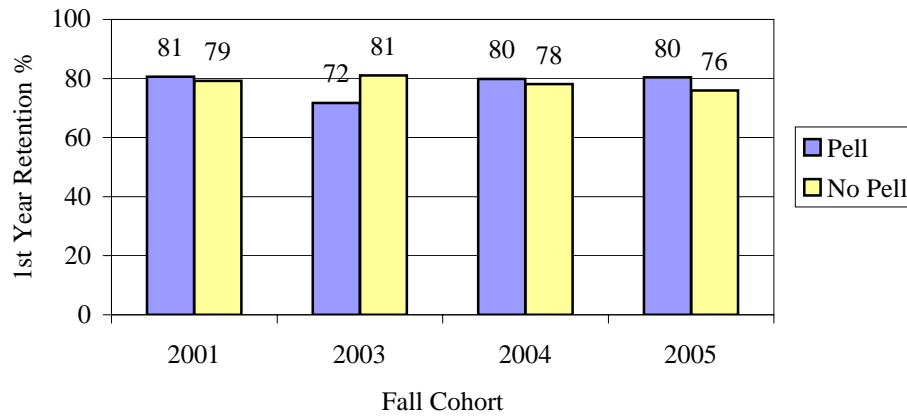
continued from previous page

College/Major	2001			2003			2004			2005		
	Cohort	Retention		Cohort	Retention		Cohort	Retention		Cohort	Retention	
		n	%		n	%		n	%		n	%
College of Health & Human Sciences	269	214	79.6	378	297	78.6	382	300	78.5	449	346	77.1
Pre-Community Health	0	0		3	3	100.0	1	1	100.0	1	0	0.0
Pre-Exercise Science	0	0		22	19	86.4	31	24	77.4	33	26	78.8
Pre-Health Behavior	0	0		0	0		1	0	0.0	0	0	
Pre-Interior Design	0	0		20	19	95.0	30	27	90.0	27	23	85.2
Pre-Nursing/Nursing	87	66	75.9	138	108	78.3	150	120	80.0	181	142	78.5
Pre-Rec/Community Leisure Serv	0	0		1	0	0.0	0	0		0	0	
Pre-Rec/Natrl/Cultrl Res Mgt	0	0		1	1	100.0	0	0		2	1	50.0
Pre-Rec/Therapeutic Recreation	0	0		1	1	100.0	1	1	100.0	1	1	100.0
Pre-Rec/Tourism & Commercial	0	0		0	0		1	1	100.0	1	0	0.0
Pre-Sport Management	0	0		14	14	100.0	40	33	82.5	51	37	72.5
Pre-Sport Med/Athletic Train	48	36	75.0	72	49	68.1	49	36	73.5	83	64	77.1
Rec/Community Leisure Serv	1	1	100.0	1	1	100.0	1	1	100.0	0	0	
Rec/Natrl/Cultrl Resource Mgt	0	0		0	0		2	0	0.0	0	0	
Rec/Therapeutic Recreation	1	0	0.0	0	0		0	0		0	0	
Rec/Tourism & Commercial	0	0		0	0		1	0	0.0	0	0	
Recreation	4	4	100.0	2	0	0.0	4	2	50.0	0	0	
Sport Management	20	18	90.0	33	27	81.8	2	1	50.0	1	1	100.0
Sport Management	9	6	66.7	0	0		0	0		0	0	
Sports Medicine	4	4	100.0	0	0		1	1	100.0	0	0	
Sports Medicine/Athletic Train	0	0		0	0		2	2	100.0	3	2	66.7

Cohorts are IPEDS First Time, Full Time, Degree-seeking Freshmen.

Georgia Southern University
First Time Freshman 1st Year Retention By College/Major/Pell and HOPE Eligibility

College of Health & Human Sciences

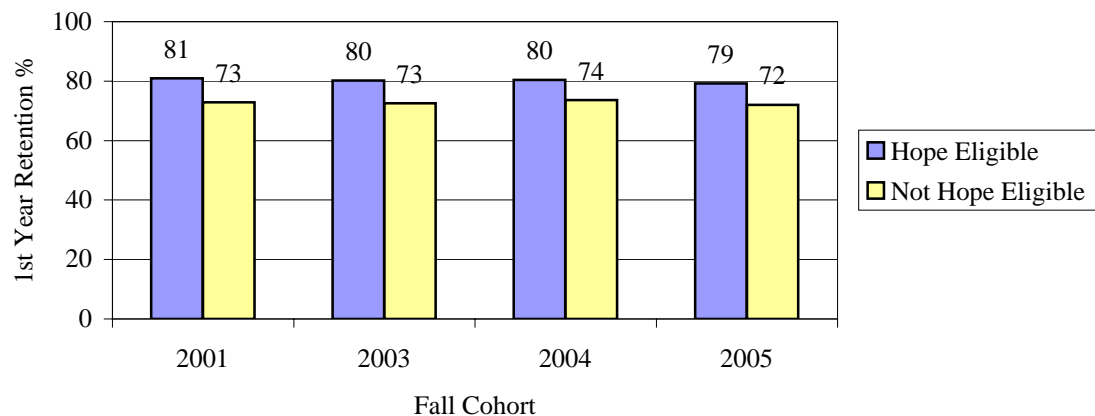


College/Pell Status	2001			2003			2004			2005		
	Cohort	Retention		Cohort	Retention		Cohort	Retention		Cohort	Retention	
		n	%		n	%		n	%		n	%
College of Health & Human Sciences	269	214	79.6	378	297	78.6	382	300	78.5	449	346	77.1
Pell	67	54	80.6	99	71	71.7	99	79	79.8	112	90	80.4
No Pell	202	160	79.2	279	226	81.0	283	221	78.1	337	256	76.0

Cohorts are IPEDS First Time, Full Time, Degree-seeking Freshmen.

Georgia Southern University
First Time Freshman 1st Year Retention By College/Major/Pell and HOPE Eligibility

College of Health & Human Sciences

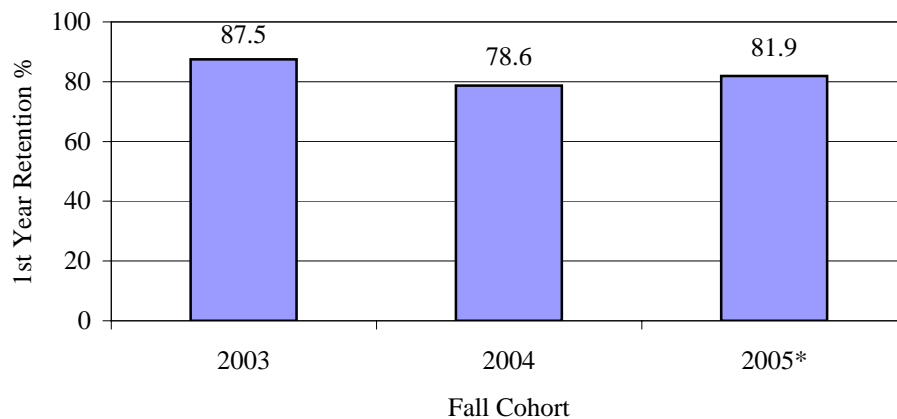


College/Hope Eligibility	2001			2003			2004			2005		
	Cohort	Retention		Cohort	Retention		Cohort	Retention		Cohort	Retention	
		n	%		n	%		n	%		n	%
College of Health & Human Sciences	269	214	79.6	378	297	78.6	382	300	78.5	449	346	77.1
Hope Eligible	221	179	81.0	298	239	80.2	276	222	80.4	313	248	79.2
Not Hope Eligible	48	35	72.9	80	58	72.5	106	78	73.6	136	98	72.1

Cohorts are IPEDS First Time, Full Time, Degree-seeking Freshmen.

Georgia Southern University
First Time Freshman 1st Year Retention By College/Major/Pell and HOPE Eligibility

College of Information Technology

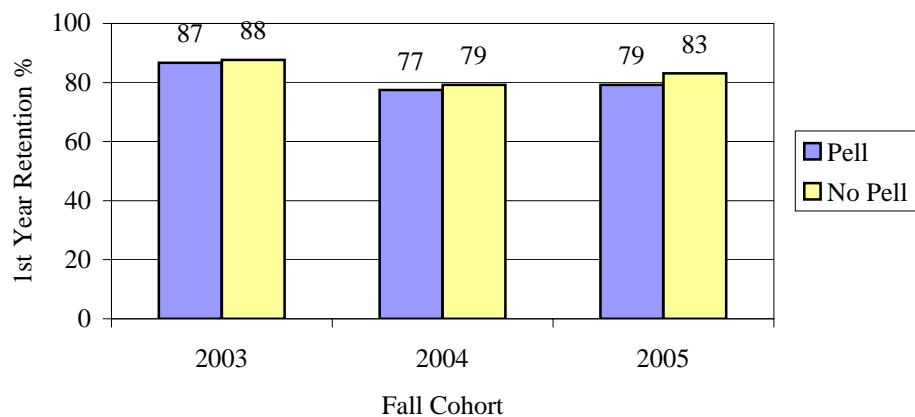


College/Major	2001			2003			2004			2005*		
	Cohort	Retention		Cohort	Retention		Cohort	Retention		Cohort	Retention	
		n	%		n	%		n	%		n	%
College of Information Technology	First Enrollment for CIT was in Fall 2003	96	84	87.5	103	81	78.6	83	68	81.9		
Computer Science		0	0		5	5	100.0	0	0			
Information Technology		12	11	91.7	17	16	94.1	3	2	66.7		
Pre-Computer Science		46	37	80.4	56	40	71.4	33	24	72.7		
Pre-Computer Science		0	0		2	1	50.0	0	0			
Pre-Information Technology		38	36	94.7	23	19	82.6	47	42	89.4		

Cohorts are IPEDS First Time, Full Time, Degree-seeking Freshmen.

Georgia Southern University
First Time Freshman 1st Year Retention By College/Major/Pell and HOPE Eligibility

College of Information Technology

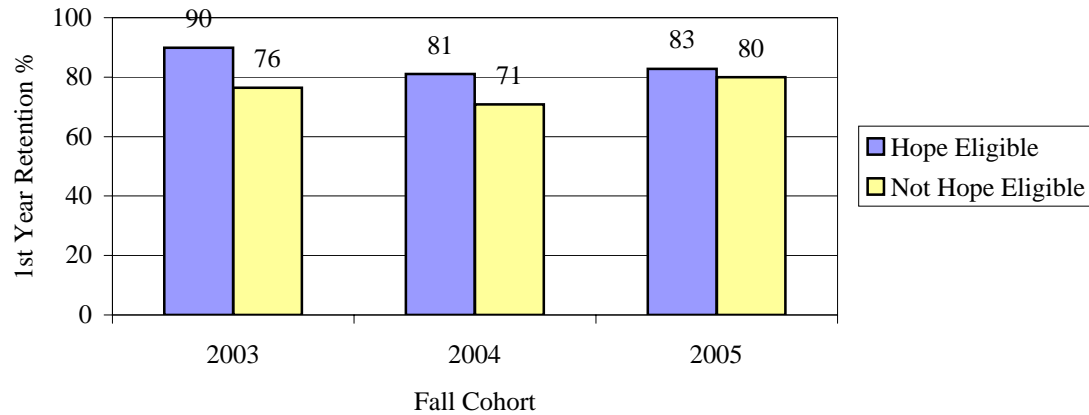


College/Pell Status	2001			2003			2004			2005		
	Cohort	Retention		Cohort	Retention		Cohort	Retention		Cohort	Retention	
		n	%		n	%		n	%		n	%
College of Information Technology	First Enrollment for CIT was Fall 2003	96	84	87.5	103	81	78.6	83	68	81.9		
Pell		15	13	86.7	31	24	77.4	24	19	79.2		
No Pell		81	71	87.7	72	57	79.2	59	49	83.1		

Cohorts are IPEDS First Time, Full Time, Degree-seeking Freshmen.

Georgia Southern University
First Time Freshman 1st Year Retention By College/Major/Pell and HOPE Eligibility

College of Information Technology

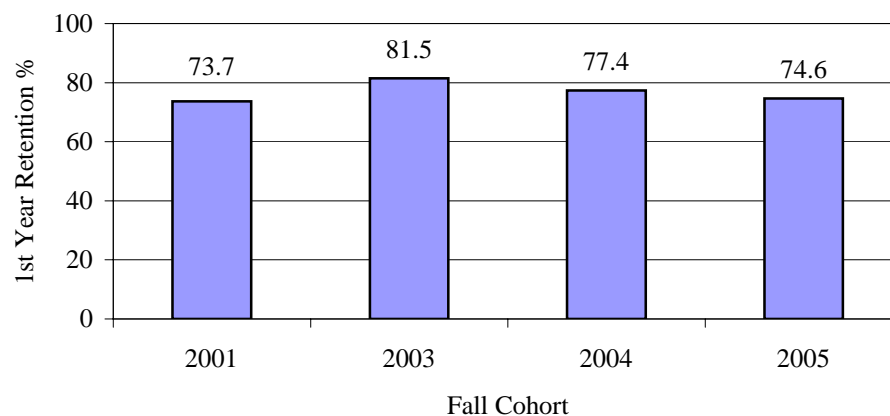


College/Hope Eligibility	2001			2003			2004			2005		
	Cohort	Retention		Cohort	Retention		Cohort	Retention		Cohort	Retention	
		n	%		n	%		n	%		n	%
College of Information Technology	First Enrollment for CIT was Fall 2003	96	84	87.5	103	81	78.6	83	68	81.9		
Hope Eligible		79	71	89.9	79	64	81.0	58	48	82.8		
Not Hope Eligible		17	13	76.5	24	17	70.8	25	20	80.0		

Cohorts are IPEDS First Time, Full Time, Degree-seeking Freshmen.

Georgia Southern University
First Time Freshman 1st Year Retention By College/Major/Pell and HOPE Eligibility

College of Liberal Arts & Social Sciences



College/Major	2001			2003			2004			2005		
	Cohort	n	Retention %	Cohort	n	Retention %	Cohort	n	Retention %	Cohort	n	Retention %
College of Liberal Arts & Social Sciences	384	283	73.7	433	353	81.5	473	366	77.4	508	379	74.6
Anthropology	6	4	66.7	7	4	57.1	1	0	0.0	4	4	100.0
Art	33	25	75.8	38	31	81.6	41	31	75.6	45	40	88.9
Broadcasting	2	1	50.0	3	2	66.7	3	3	100.0	0	0	
Communication Arts	0	0		3	3	100.0	6	5	83.3	1	1	100.0
Composition	1	1	100.0	3	3	100.0	3	2	66.7	3	3	100.0
English	10	6	60.0	13	12	92.3	16	11	68.8	21	17	81.0
French	2	2	100.0	1	1	100.0	0	0		2	2	100.0
German	0	0		4	4	100.0	1	1	100.0	2	1	50.0
History	13	10	76.9	19	17	89.5	18	12	66.7	22	15	68.2
Journalism	0	0		0	0		10	8	80.0	2	2	100.0
Justice Studies	33	28	84.8	54	41	75.9	46	31	67.4	45	34	75.6
Music	12	11	91.7	9	5	55.6	11	10	90.9	7	5	71.4
Music Ed/Choral Sequence	3	3	100.0	10	8	80.0	5	4	80.0	6	4	66.7

Georgia Southern University
First Time Freshman 1st Year Retention By College/Major/Pell and HOPE Eligibility

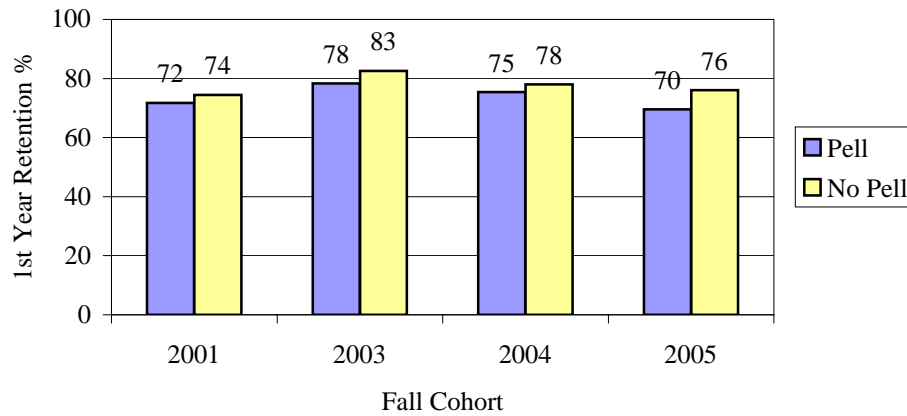
continued from previous page

College/Major	2001			2003			2004			2005		
	Cohort	Retention		Cohort	Retention		Cohort	Retention		Cohort	Retention	
		n	%		n	%		n	%		n	%
College of Liberal Arts & Social Sciences	384	283	73.7	433	353	81.5	473	366	77.4	508	379	74.6
Music Ed/Instrumental Sequence	3	2	66.7	8	8	100.0	13	13	100.0	17	14	82.4
Performance	6	4	66.7	4	4	100.0	1	1	100.0	3	2	66.7
Philosophy	3	2	66.7	2	2	100.0	3	2	66.7	7	5	71.4
Political Sci/Pre-Law	37	31	83.8	21	17	81.0	33	24	72.7	26	19	73.1
Political Science	28	18	64.3	28	23	82.1	30	24	80.0	38	27	71.1
Pre-Communication Arts	101	69	68.3	100	85	85.0	110	90	81.8	118	92	78.0
Psychology	85	62	72.9	92	70	76.1	105	84	80.0	111	71	64.0
Public Relations	0	0		1	1	100.0	1	1	100.0	1	1	100.0
Sociology	3	1	33.3	6	6	100.0	2	1	50.0	10	10	100.0
Sociology/Applied	0	0		1	1	100.0	0	0		0	0	
Sociology/Social Services	0	0		0	0		2	1	50.0	3	0	0.0
Sociology/Social Work	0	0		1	1	100.0	1	0	0.0	1	1	100.0
Spanish	3	3	100.0	5	4	80.0	4	2	50.0	2	2	100.0
Theatre	0	0		0	0		2	2	100.0	1	1	100.0
Writing and Linguistics	0	0		0	0		5	3	60.0	10	6	60.0

Cohorts are IPEDS First Time, Full Time, Degree-seeking Freshmen.

Georgia Southern University
First Time Freshman 1st Year Retention By College/Major/Pell and HOPE Eligibility

College of Liberal Arts & Social Sciences

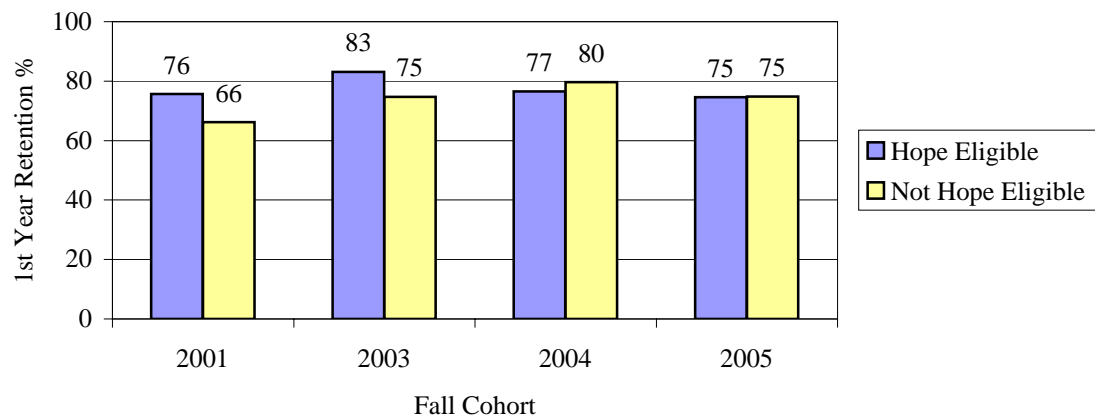


College/Pell Status	2001			2003			2004			2005		
	Cohort	Retention		Cohort	Retention		Cohort	Retention		Cohort	Retention	
		n	%		n	%		n	%		n	%
College of Liberal Arts & Social Sciences	384	283	73.7	433	353	81.5	473	366	77.4	508	379	74.6
Pell	106	76	71.7	111	87	78.4	118	89	75.4	115	80	69.6
No Pell	278	207	74.5	322	266	82.6	355	277	78.0	393	299	76.1

Cohorts are IPEDS First Time, Full Time, Degree-seeking Freshmen.

Georgia Southern University
First Time Freshman 1st Year Retention By College/Major/Pell and HOPE Eligibility

College of Liberal Arts & Social Sciences

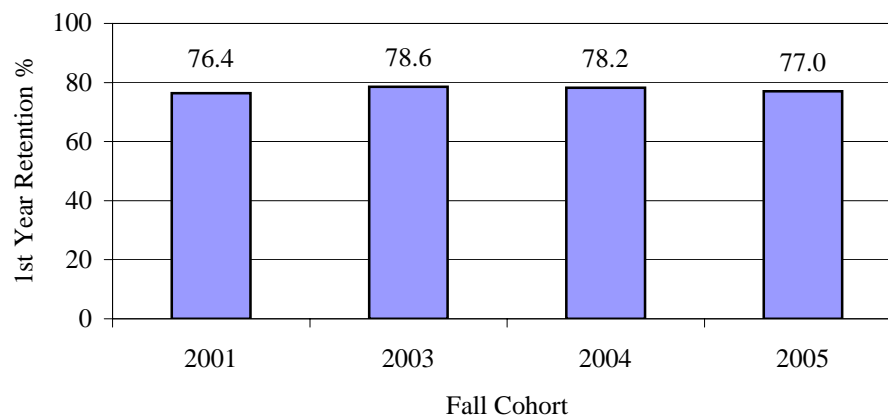


College/Hope Eligibility	2001			2003			2004			2005		
	Cohort	Retention		Cohort	Retention		Cohort	Retention		Cohort	Retention	
		n	%		n	%		n	%		n	%
College of Liberal Arts & Social Sciences	384	283	73.7	433	353	81.5	473	366	77.4	508	379	74.6
Hope Eligible	304	230	75.7	350	291	83.1	350	268	76.6	385	287	74.5
Not Hope Eligible	80	53	66.3	83	62	74.7	123	98	79.7	123	92	74.8

Cohorts are IPEDS First Time, Full Time, Degree-seeking Freshmen.

Georgia Southern University
First Time Freshman 1st Year Retention By College/Major/Pell and HOPE Eligibility

College of Science & Technology



College/Major	2001			2003			2004			2005		
	Cohort	n	Retention %	Cohort	n	Retention %	Cohort	n	Retention %	Cohort	n	Retention %
College of Science & Technology	644	492	76.4	593	466	78.6	684	535	78.2	682	525	77.0
Biology	141	108	76.6	196	154	78.6	250	198	79.2	166	129	77.7
Blding Const & Contracting	16	11	68.8	0	0		0	0		0	0	
Chem/Pre-Pharmacy	18	15	83.3	22	19	86.4	15	11	73.3	34	27	79.4
Chemistry	8	6	75.0	41	34	82.9	59	47	79.7	30	19	63.3
Chemistry/Pre-Dentistry	3	3	100.0	2	1	50.0	3	3	100.0	8	7	87.5
Chemistry/Pre-Medicine	5	4	80.0	2	0	0.0	1	1	100.0	32	27	84.4
Civil Engineering Tech	6	4	66.7	11	7	63.6	10	7	70.0	16	12	75.0
Computer Science	1	0	0.0	0	0		0	0		0	0	
Construction Management	0	0		30	20	66.7	25	14	56.0	48	38	79.2
Electrical Engineering Tech	5	3	60.0	8	7	87.5	7	6	85.7	7	6	85.7
Geography	2	2	100.0	0	0		2	2	100.0	2	1	50.0
Geology	3	2	66.7	5	4	80.0	2	1	50.0	4	4	100.0
GTREP/Civil Engineering	20	13	65.0	22	18	81.8	21	19	90.5	26	23	88.5

Georgia Southern University
First Time Freshman 1st Year Retention By College/Major/Pell and HOPE Eligibility

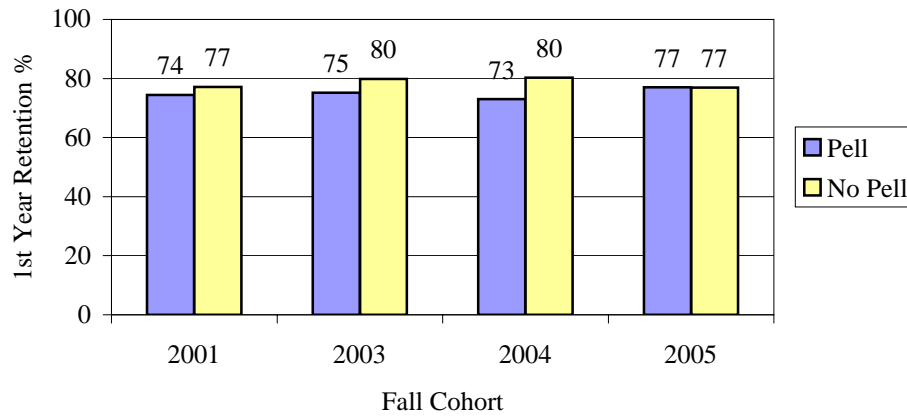
continued from previous page

College/Major	2001			2003			2004			2005		
	Cohort	Retention		Cohort	Retention		Cohort	Retention		Cohort	Retention	
		n	%		n	%		n	%		n	%
College of Science & Technology	644	492	76.4	593	466	78.6	684	535	78.2	682	525	77.0
GTREP/Computer Engineering	20	19	95.0	22	18	81.8	18	14	77.8	19	14	73.7
GTREP/Electrical Engineering	0	0		18	12	66.7	16	12	75.0	16	11	68.8
GTREP/Mechanical Engineering	0	0		8	7	87.5	35	31	88.6	36	30	83.3
Industrial Engineering Tech	1	1	100.0	0	0		2	2	100.0	0	0	
Industrial Management	0	0		0	0		0	0		1	0	0.0
Math W/Teacher Cert	1	0	0.0	0	0		0	0		0	0	
Mathematics	8	6	75.0	9	6	66.7	4	2	50.0	9	6	66.7
Mechanical Engineering Tech	15	11	73.3	36	30	83.3	14	10	71.4	26	19	73.1
Phy/Pre-Dent	2	2	100.0	0	0		1	0	0.0	2	1	50.0
Phy/Pre-Med	17	12	70.6	0	0		3	1	33.3	2	0	0.0
Physics	2	2	100.0	8	6	75.0	9	6	66.7	11	10	90.9
Pre-Computer Science	76	53	69.7	0	0		0	0		0	0	
Pre-Forestry	2	1	50.0	2	0	0.0	3	3	100.0	2	0	0.0
Printing Management	5	4	80.0	5	3	60.0	1	1	100.0	4	3	75.0
Regents Engr Transfer Prg	46	37	80.4	38	35	92.1	39	31	79.5	42	36	85.7
Technology	2	0	0.0	0	0		0	0		0	0	
Technology Options Program	219	173	79.0	108	85	78.7	144	113	78.5	139	102	73.4

Cohorts are IPEDS First Time, Full Time, Degree-seeking Freshmen.

Georgia Southern University
First Time Freshman 1st Year Retention By College/Major/Pell and HOPE Eligibility

College of Science & Technology

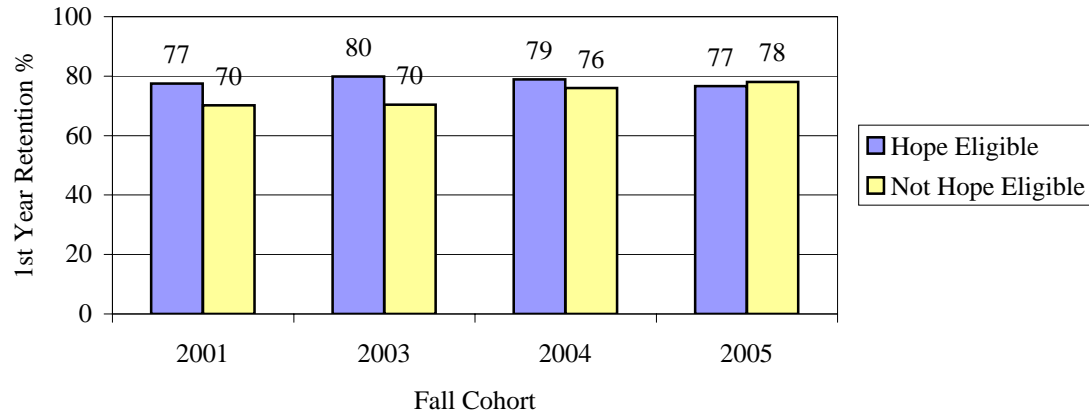


College/Pell Status	2001			2003			2004			2005		
	Cohort	n	%	Cohort	n	%	Cohort	n	%	Cohort	n	%
College of Science & Technology	644	492	76.4	593	466	78.6	684	535	78.2	682	525	77.0
Pell	172	128	74.4	157	118	75.2	193	141	73.1	161	124	77.0
No Pell	472	364	77.1	436	348	79.8	491	394	80.2	521	401	77.0

Cohorts are IPEDS First Time, Full Time, Degree-seeking Freshmen.

Georgia Southern University
First Time Freshman 1st Year Retention By College/Major/Pell and HOPE Eligibility

College of Science & Technology

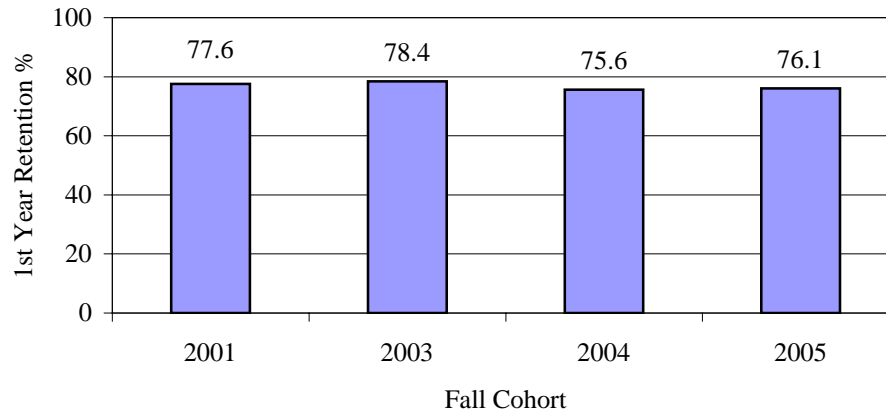


College/Hope Eligibility	2001			2003			2004			2005		
	Cohort	Retention		Cohort	Retention		Cohort	Retention		Cohort	Retention	
		n	%		n	%		n	%		n	%
College of Science & Technology	644	492	76.4	593	466	78.6	684	535	78.2	682	525	77.0
Hope Eligible	550	426	77.5	512	409	79.9	513	405	78.9	527	404	76.7
Not Hope Eligible	94	66	70.2	81	57	70.4	171	130	76.0	155	121	78.1

Cohorts are IPEDS First Time, Full Time, Degree-seeking Freshmen.

Georgia Southern University
First Time Freshman 1st Year Retention By College/Major/Pell and HOPE Eligibility

Office of the Provost

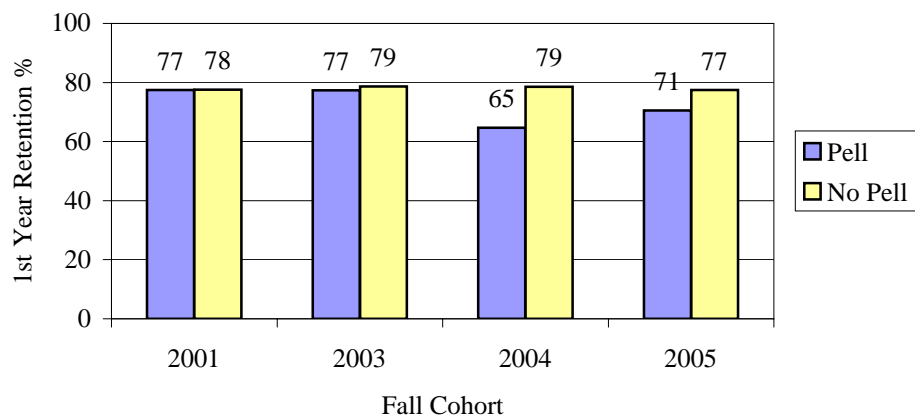


College/Major	2001			2003			2004			2005		
	Cohort	n	Retention %	Cohort	n	Retention %	Cohort	n	Retention %	Cohort	n	Retention %
Office of the Provost	664	515	77.6	570	447	78.4	623	471	75.6	560	426	76.1
General Studies	0	0		3	3	100.0	3	3	100.0	1	1	100.0
International Studies	9	7	77.8	7	7	100.0	11	9	81.8	20	18	90.0
International Trade	2	2	100.0	4	4	100.0	8	8	100.0	5	3	60.0
Undeclared	653	506	77.5	556	433	77.9	601	451	75.0	534	404	75.7

Cohorts are IPEDS First Time, Full Time, Degree-seeking Freshmen.

Georgia Southern University
First Time Freshman 1st Year Retention By College/Major/Pell and HOPE Eligibility

Office of the Provost

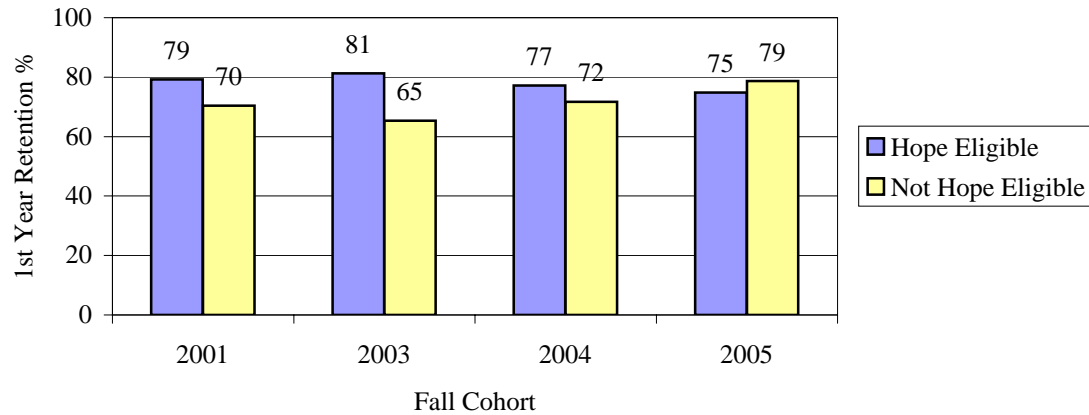


College/Pell Status	2001			2003			2004			2005		
	Cohort	n	%	Cohort	n	%	Cohort	n	%	Cohort	n	%
Office of the Provost	664	515	77.6	570	447	78.4	623	471	75.6	560	426	76.1
Pell	133	103	77.4	115	89	77.4	133	86	64.7	112	79	70.5
No Pell	531	412	77.6	455	358	78.7	490	385	78.6	448	347	77.5

Cohorts are IPEDS First Time, Full Time, Degree-seeking Freshmen.

Georgia Southern University
First Time Freshman 1st Year Retention By College/Major/Pell and HOPE Eligibility

Office of the Provost



College/Hope Eligibility	2001			2003			2004			2005		
	Cohort	Retention		Cohort	Retention		Cohort	Retention		Cohort	Retention	
		n	%		n	%		n	%		n	%
Office of the Provost	664	515	77.6	570	447	78.4	623	471	75.6	560	426	76.1
Hope Eligible	539	427	79.2	469	381	81.2	439	339	77.2	377	282	74.8
Not Hope Eligible	125	88	70.4	101	66	65.3	184	132	71.7	183	144	78.7

Cohorts are IPEDS First Time, Full Time, Degree-seeking Freshmen.