

Six Year Graduation Rate by Colleges

IPEDS First Time Freshman Cohorts for Fall 1998, 1999, 2000, and 2001



**Office of Strategic Research
and Analysis**

November 30, 2007

Georgia Southern University
Office of Strategic Research and Analysis (OSRA)
November 1, 2007

Project Request: IPEDS First-time Freshman Six Year Graduation Rate by Georgia Southern College.

Requested by: Dr. Jayne Perkins Brown, Associate Vice President, Strategic Research and Analysis

Project Abstract: Data were requested on the six year graduation rates of the Fall 1998, 1999, 2000, and 2001 IPEDS First Time Freshman Cohorts by Georgia Southern College. This report was done in place of the Report Card Review data.

Methodology: The first-time freshman cohorts and their six year graduation rates are reported in the IPEDS Graduation Rate Surveys (GRS-1). The data tables created for that reporting were used so as to be consistent with graduation rates already reported and to avoid the duplication of effort in regenerating those numbers. It was only necessary to add the data elements of college, major and learning support status to this pre-existing data. Those data elements are not included in the IPEDS GRS-1 reporting. The Student Information Reporting System (SIRS) was the original source for identifying the cohorts, their graduation rates, and all other data elements present. The exception is college and major which were from the Data Warehouse Enrollment tables (YEN). Those fields are not in SIRS. College and major are as of graduation or last enrollment for those who did not graduate within the six years with an undergraduate degree from Georgia Southern University. College and major of undergraduate degree reported are based on the degree with the lowest sequence number (in Banner) where a student receives dual degrees.

The cohorts reported on in this report are the IPEDS First-time, Full-time Degree-seeking Freshmen defined as undergraduates who enter college for the first time in Fall Term or who have graduated from high school within the same calendar year of that Fall Term. First time summer students are also included if they are enrolled in the Fall Term. They are the same cohorts as reported in the IPEDS Graduation Rate Survey.

Project Timeframe: November 1 – November 30, 2007

Project Costs: staff time, plus copies of project info

Project Contact: Dr. Jayne Perkins Brown, Associate Vice President, OSRA

Project Support: Office of Strategic Research and Analysis

- Dr. Jayne Perkins Brown, Associate Vice President
- Mr. Paul Wilver, Assistant Director, Decision Support Systems

Project Source of Copies: Office of Strategic Research and Analysis
Georgia Southern University
P.O. Box 8126
Statesboro, GA 30460-8126
(912) 681-5218, (912) 871-1403-fax

Distribution: placed on the OSRA download web page

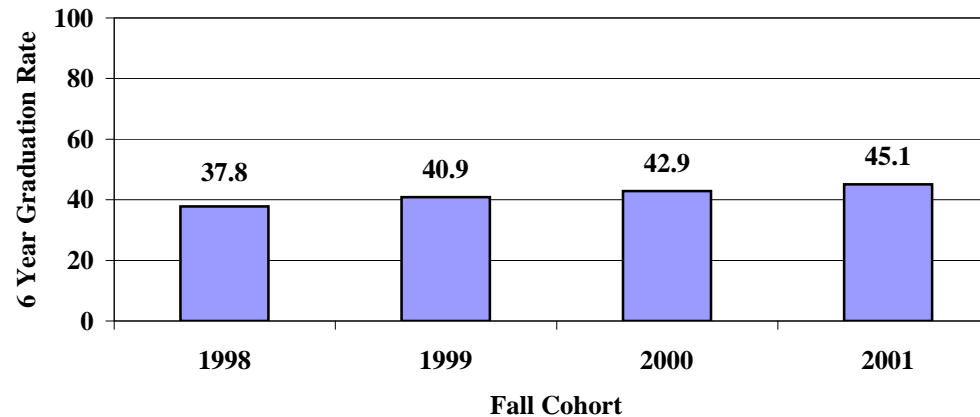
Number of Pages: 20

Notes: n/a

File Location: U:\Studies\Georgia Southern Report Card\Graduation Rate_F98-F01_Cohorts\ReportCardGraduationRate_98-01_abstract_112107.doc

Georgia Southern University First Time Freshman Six Year Graduation Rate

Georgia Southern University



College	1998 ^a			1999 ^b			2000			2001		
	Cohort	Graduated n	%	Cohort	Graduated n	%	Cohort	Graduated n	%	Cohort	Graduated n	%
Georgia Southern University	2,897	1,096	37.8	3,266	1,336	40.9	2,861	1,227	42.9	2,633	1,187	45.1
College of Business Administration	714	350	49.0	811	391	48.2	645	323	50.1	607	315	51.9
College of Education	232	106	45.7	281	138	49.1	236	127	53.8	239	139	58.2
College of Health & Human Sciences	505	276	54.7	580	308	53.1	455	244	53.6	407	238	58.5
College of Information Technology ^c	14	6	42.9	40	21	52.5	63	47	74.6	80	49	61.3
College of Liberal Arts & Social Sciences	543	215	39.6	630	292	46.3	626	298	47.6	536	266	49.6
College of Science & Technology	476	130	27.3	542	165	30.4	513	172	33.5	486	157	32.3
College of Science & Technology Less Engineering Studies Programs^d	384	130	33.9	442	165	37.3	408	172	42.2	354	157	44.4
Office of the Provost	413	13	3.1	382	21	5.5	323	16	5.0	278	23	8.3
Office of the Provost Less Learning Support	250	8	3.2	246	16	6.5	221	10	4.5	264	23	8.7

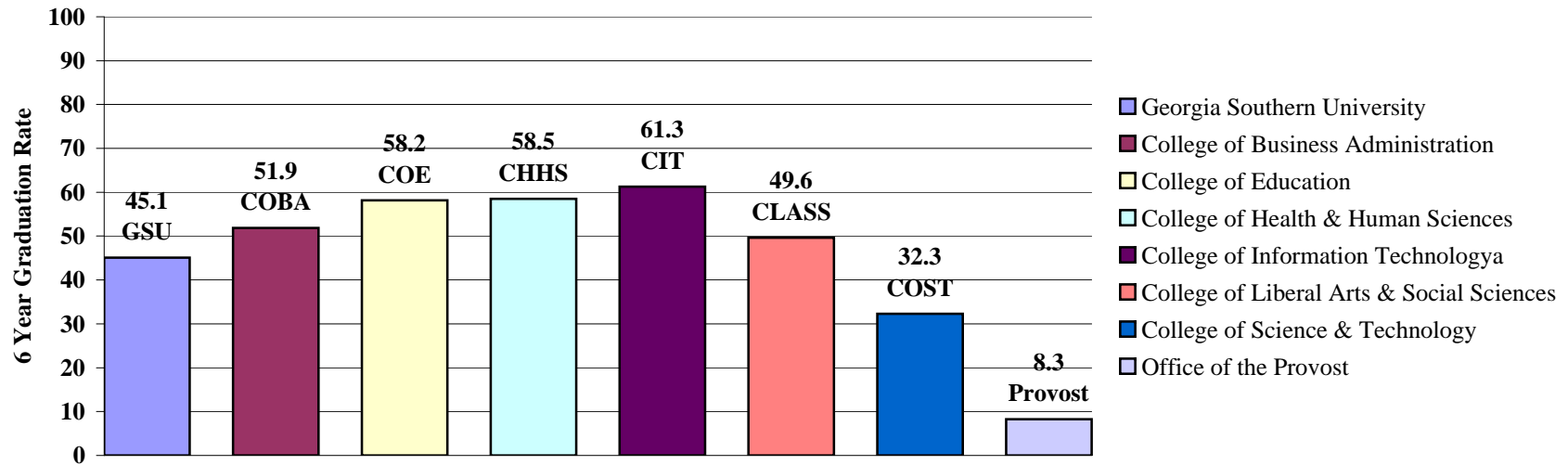
Notes. Cohorts are IPEDS First-time, Full-time, Degree-seeking Freshmen. College and major are at graduation (undergraduate degree with lowest sequence number in Banner) or at last enrollment at the undergraduate level. Source: Student Information Reporting System (SIRS) and Data Warehouse Enrollment Tables (YEN). The Jiann-Ping Hsu College of Public Health is not included since it only includes graduate level programs.

^{a,b} Logic was updated to utilize Banner lowest degree sequence number and to verify enrollment at the undergraduate level.

^c Since enrollment for this report spans six years for each cohort, it is possible for students to be enrolled in and graduating from the College of Information Technology even though it was not established until Fall 2003.

^d Engineering Studies majors excluded are GTREP, Regents Engineering Transfer Program, Two Plus Engineering Transfer, and Technology Options Program

Georgia Southern University First Time Freshman Six Year Graduation Rate



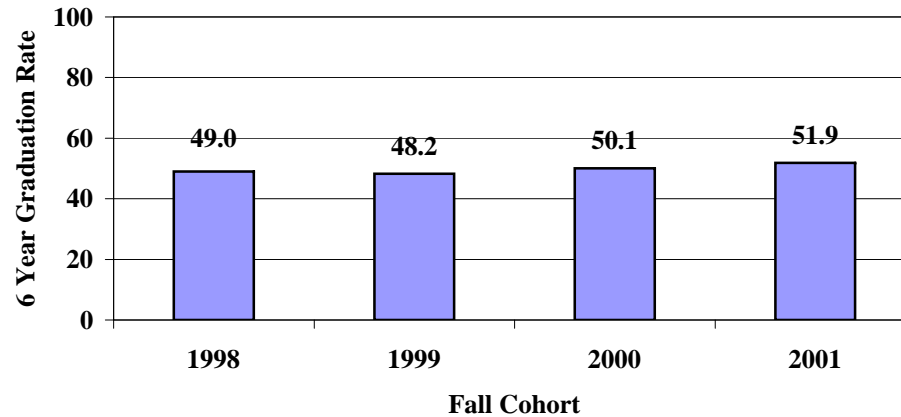
College	Cohort	2001	
		n	%
Georgia Southern University	2,633	1,187	45.1
College of Business Administration	607	315	51.9
College of Education	239	139	58.2
College of Health & Human Sciences	407	238	58.5
College of Information Technology ^a	80	49	61.3
College of Liberal Arts & Social Sciences	536	266	49.6
College of Science & Technology	486	157	32.3
Office of the Provost	278	23	8.3

Note. Cohorts are IPEDS First-time, Full-time, Degree-seeking Freshmen. College and major are at graduation (undergraduate degree with lowest sequence number in Banner) or at last enrollment at the undergraduate level. Source: Student Information Reporting System (SIRS) and Data Warehouse Enrollment Tables (YEN).

^a Since enrollment for this report spans six years for each cohort, it is possible for students to be enrolled in and graduating from the College of Information Technology even though it was not established until Fall 2003.

**Georgia Southern University
First Time Freshman Six Year Graduation Rate**

College of Business Administration



College/Major	1998 ^a			1999 ^b			2000			2001		
	Cohort	n	%	Cohort	n	%	Cohort	n	%	Cohort	n	%
College of Business Administration	714	350	49.0	811	391	48.2	645	323	50.1	607	315	51.9
Accounting	41	31	75.6	46	38	82.6	48	40	83.3	37	27	73.0
Economics	3	3	100.0	6	5	83.3	5	4	80.0	6	6	100.0
Economics/Business Economics	0			0			0			1	0	0.0
Economics/International Bus	3	1	33.3	6	6	100.0	4	4	100.0	6	3	50.0
Finance	47	40	85.1	51	45	88.2	49	43	87.8	48	42	87.5
Finance/Banking	5	5	100.0	1	1	100.0	3	3	100.0	0		
Finance/Financial Planning	5	5	100.0	3	3	100.0	8	7	87.5	5	5	100.0
Finance/Financial Services	0			0			1	0	0.0	5	4	80.0
Finance/Real Estate	2	2	100.0	5	4	80.0	6	6	100.0	2	2	100.0
Finance/Risk Management	3	3	100.0	2	2	100.0	9	8	88.9	10	8	80.0

continued on next page

Note. Cohorts are IPEDS First-time, Full-time, Degree-seeking Freshmen. College and major are at graduation (undergraduate degree with lowest sequence number in Banner) or at last enrollment at the undergraduate level. Source: Student Information Reporting System (SIRS) and Data Warehouse Enrollment Tables (YEN).

^{a/b} Logic was updated to utilize Banner lowest degree sequence number and to verify enrollment at the undergraduate level.

Georgia Southern University
First Time Freshman Six Year Graduation Rate

continued from previous page

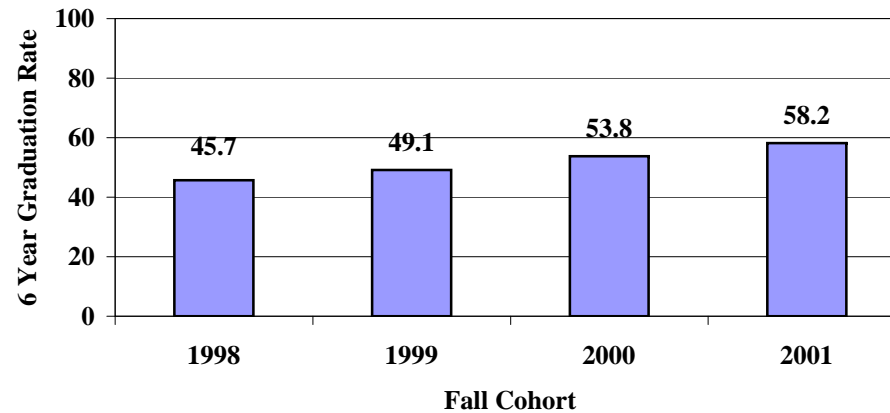
College/Major	1998 ^a			1999 ^b			2000			2001		
	Cohort	Graduated		Cohort	Graduated		Cohort	Graduated		Cohort	Graduated	
		n	%		n	%		n	%		n	%
College of Business Administration	714	350	49.0	811	391	48.2	645	323	50.1	607	315	51.9
Info Sys/Logistics Info Sys	0			0			0	0		1	1	100.0
Information Systems	78	69	88.5	72	66	91.7	26	23	88.5	16	16	100.0
Information Technology	1	0	0.0	1	0	0.0	5	0	0.0	13	0	0.0
Logis/Intermodal Transport	37	33	89.2	27	25	92.6	27	25	92.6	21	19	90.5
Management	49	36	73.5	64	47	73.4	64	53	82.8	66	53	80.3
Management/Human Resource Mgt	21	21	100.0	26	25	96.2	16	15	93.8	13	10	76.9
Marketing	57	47	82.5	78	67	85.9	52	47	90.4	63	56	88.9
Marketing/Fash Merchandising	6	6	100.0	8	6	75.0	8	8	100.0	10	8	80.0
Marketing/Retail Management	1	1	100.0	1	1	100.0	4	3	75.0	6	6	100.0
Marketing/Sales & Sales Mgt	37	35	94.6	32	30	93.8	22	20	90.9	35	32	91.4
Mgt/Entrepreneurship-Small Bus	13	10	76.9	17	14	82.4	17	13	76.5	17	14	82.4
Mgt/Operations Management	2	2	100.0	4	4	100.0	1	1	100.0	3	2	66.7
Pre-Bus Accounting	10	0	0.0	0			0			0		
Pre-Bus Eco/Intl Bus	1	0	0.0	0			0			0		
Pre-Bus Economics	2	0	0.0	0			0			0		
Pre-Bus Finance	4	0	0.0	0			0			0		
Pre-Bus Info/Systems	7	0	0.0	1	0	0.0	0			0		
Pre-Bus Management	61	0	0.0	0			0			0		
Pre-Bus Marketing	17	0	0.0	0			0			0		
Pre-Bus Mgt/Entrepshp-Sml Bus	1	0	0.0	0			0			0		
Pre-Business	200	0	0.0	358	0	0.0	268	0	0.0	221	0	0.0
Pre-Information Technology	0			0			2	0	0.0	1	0	0.0
Regional Economic Development	0			2	2	100.0	0			1	1	100.0

Note. Cohorts are IPEDS First-time, Full-time, Degree-seeking Freshmen. College and major are at graduation (undergraduate degree with lowest sequence number in Banner) or at last enrollment at the undergraduate level. Source: Student Information Reporting System (SIRS) and Data Warehouse Enrollment Tables (YEN).

^{a/b} Logic was updated to utilize Banner lowest degree sequence number and to verify enrollment at the undergraduate level.

**Georgia Southern University
First Time Freshman Six Year Graduation Rate**

College of Education



College/Major	1998 ^a			1999 ^b			2000			2001		
	Cohort	n	%	Cohort	n	%	Cohort	n	%	Cohort	n	%
College of Education	232	106	45.7	281	138	49.1	236	127	53.8	239	139	58.2
Art Education	1	0	0.0	5	2	40.0	1	1	100.0	1	1	100.0
Early Child Education/BRC	0			0			1	0	0.0	0		
Early Childhood Education	70	56	80.0	82	70	85.4	71	58	81.7	81	77	95.1
Health & Physical Education	3	3	100.0	5	4	80.0	8	7	87.5	7	3	42.9
Middle Grades Education	11	10	90.9	13	13	100.0	28	23	82.1	22	17	77.3
Pre Ed Teach FieldChemistry	0			0			1	0	0.0	0		
Pre-Ed Teaching Field-Biology	0			0			1	0	0.0	2	0	0.0
Pre-Ed Art Education	1	0	0.0	0			0			1	0	0.0
Pre-Ed Business Education	2	0	0.0	1	0	0.0	0			0		
Pre-Ed Early Childhood Ed	51	0	0.0	45	0	0.0	29	0	0.0	31	0	0.0

continued on next page

Note. Cohorts are IPEDS First-time, Full-time, Degree-seeking Freshmen. College and major are at graduation (undergraduate degree with lowest sequence number in Banner) or at last enrollment at the undergraduate level. Source: Student Information Reporting System (SIRS) and Data Warehouse Enrollment Tables (YEN).

^{a/b} Logic was updated to utilize Banner lowest degree sequence number and to verify enrollment at the undergraduate level.

Georgia Southern University
First Time Freshman Six Year Graduation Rate

continued from previous page

College/Major	1998 ^a			1999 ^b			2000			2001		
	Cohort	Graduated		Cohort	Graduated		Cohort	Graduated		Cohort	Graduated	
		n	%		n	%		n	%		n	%
College of Education	232	106	45.7	281	138	49.1	236	127	53.8	239	139	58.2
Pre-Ed English Education	3	0	0.0	4	0	0.0	2	0	0.0	4	0	0.0
Pre-Ed Fam/Consumer Sciences	0			1	0	0.0	0			1	0	0.0
Pre-Ed Health & Phys-Ed	9	0	0.0	8	0	0.0	9	0	0.0	8	0	0.0
Pre-Ed Mathematics Ed	1	0	0.0	2	0	0.0	5	0	0.0	4	0	0.0
Pre-Ed Middle Grades Ed	9	0	0.0	12	0	0.0	8	0	0.0	8	0	0.0
Pre-Ed Sci Ed/Chemistry	0			1	0	0.0	0			0		
Pre-Ed Sci Ed/Physics	0			1	0	0.0	0			0		
Pre-Ed Science Ed/Biology	0			0			0			1	0	0.0
Pre-Ed Science Education	0			0			1	0	0.0	0		
Pre-Ed Social Science Ed	4	0	0.0	8	0	0.0	1	0	0.0	0		
Pre-Ed Special Education	5	0	0.0	19	0	0.0	6	0	0.0	8	0	0.0
Pre-Ed Teach Fld-French	1	0	0.0	0			0			0		
Pre-Ed Teach Fld-Spanish	6	0	0.0	1	0	0.0	1	0	0.0	0		
Pre-Ed Teach Fld-Tech Ed	0			1	0	0.0	0			0		
Pre-Ed Teaching Field Physics	1	0	0.0	0			0			0		
Pre-Ed Teaching Field-History	1	0	0.0	3	0	0.0	9	0	0.0	6	0	0.0
Pre-Education	7	0	0.0	8	0	0.0	2	0	0.0	2	0	0.0
Science Ed/Biology	0			0			1	0	0.0	0		
Social Science Education	1	1	100.0	0			1	0	0.0	0		
Spanish	0			1	1	100.0	0			0		
Special Education	9	9	100.0	20	18	90.0	9	7	77.8	13	12	92.3
Tch Field-Mathematics Ed	7	6	85.7	10	6	60.0	5	5	100.0	11	8	72.7
Tch-Field Fam/Consumer Science	2	2	100.0	2	1	50.0	3	3	100.0	1	1	100.0
Teach Field-Business Education	4	3	75.0	5	5	100.0	5	4	80.0	3	3	100.0
Teach Field-Political Science	0			1	1	100.0	2	2	100.0	2	1	50.0
Teach Fld-Technology Ed	2	2	100.0	3	2	66.7	8	6	75.0	4	3	75.0
Teaching Field-Biology	6	3	50.0	2	2	100.0	2	1	50.0	3	2	66.7
Teaching Field-Chemistry	1	0	0.0	0			1	1	100.0	0		

continued on next page

Note. Cohorts are IPEDS First-time, Full-time, Degree-seeking Freshmen. College and major are at graduation (undergraduate degree with lowest sequence number in Banner) or at last enrollment at the undergraduate level. Source: Student Information Reporting System (SIRS) and Data Warehouse Enrollment Tables (YEN).

^{a/b} Logic was updated to utilize Banner lowest degree sequence number and to verify enrollment at the undergraduate level.

Georgia Southern University
First Time Freshman Six Year Graduation Rate

continued from previous page

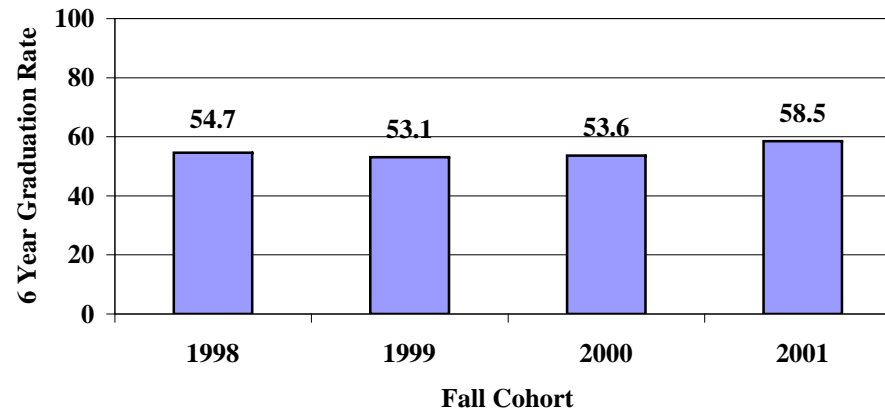
College/Major	1998 ^a			1999 ^b			2000			2001		
	Cohort	Graduated		Cohort	Graduated		Cohort	Graduated		Cohort	Graduated	
		n	%		n	%		n	%		n	%
College of Education	232	106	45.7	281	138	49.1	236	127	53.8	239	139	58.2
Teaching Field-English	7	6	85.7	11	7	63.6	3	3	100.0	6	3	50.0
Teaching Field-French	0			1	1	100.0	0			0		
Teaching Field-Geography	2	0	0.0	0			4	1	25.0	0		
Teaching Field-History	3	3	100.0	5	5	100.0	8	5	62.5	8	7	87.5
Teaching Field-Spanish	2	2	100.0	0			0			1	1	100.0

Note. Cohorts are IPEDS First-time, Full-time, Degree-seeking Freshmen. College and major are at graduation (undergraduate degree with lowest sequence number in Banner) or at last enrollment at the undergraduate level. Source: Student Information Reporting System (SIRS) and Data Warehouse Enrollment Tables (YEN).

^{a,b} Logic was updated to utilize Banner lowest degree sequence number and to verify enrollment at the undergraduate level.

Georgia Southern University First Time Freshman Six Year Graduation Rate

College of Health & Human Sciences



College/Major	1998 ^a			1999 ^b			2000			2001		
	Cohort	n	%	Cohort	n	%	Cohort	n	%	Cohort	n	%
College of Health & Human Sciences	505	276	54.7	580	308	53.1	455	244	53.6	407	238	58.5
Child/Fam Development	73	57	78.1	82	63	76.8	53	41	77.4	31	26	83.9
Community Health	22	13	59.1	29	21	72.4	30	26	86.7	22	18	81.8
Exercise Science	58	33	56.9	62	41	66.1	49	28	57.1	47	34	72.3
Fashion Merch & Apparel Design	18	10	55.6	33	21	63.6	28	15	53.6	20	13	65.0
Health Behavior	6	5	83.3	5	5	100.0	2	2	100.0	2	1	50.0
Hotel/Restr Management	38	27	71.1	35	14	40.0	30	9	30.0	28	16	57.1
Interior Design	32	19	59.4	28	15	53.6	25	11	44.0	17	12	70.6
Medical Technology	6	2	33.3	8	1	12.5	4	1	25.0	1	0	0.0
Nursing	42	32	76.2	46	43	93.5	49	44	89.8	51	42	82.4
Nutrition/Food Sci	0			2	0	0.0	5	0	0.0	1	0	0.0

continued on next page

Note. Cohorts are IPEDS First-time, Full-time, Degree-seeking Freshmen. College and major are at graduation (undergraduate degree with lowest sequence number in Banner) or at last enrollment at the undergraduate level. Source: Student Information Reporting System (SIRS) and Data Warehouse Enrollment Tables (YEN).

^{a,b} Logic was updated to utilize Banner lowest degree sequence number and to verify enrollment at the undergraduate level.

Georgia Southern University
First Time Freshman Six Year Graduation Rate

continued from previous page

College/Major	1998 ^a			1999 ^b			2000			2001		
	Cohort	Graduated n	%	Cohort	Graduated n	%	Cohort	Graduated n	%	Cohort	Graduated n	%
College of Health & Human Sciences	505	276	54.7	580	308	53.1	455	244	53.6	407	238	58.5
Nutrition/Food Sci/Dietetics	15	12	80.0	16	15	93.8	4	4	100.0	10	8	80.0
Nutrition/Food Sci/Hospitality	0			0			0			1	0	0.0
Pre-Child/Fam Development	0			0			1	0	0.0	3	0	0.0
Pre-Community Health	3	0	0.0	2	0	0.0	2	0	0.0	0		
Pre-Exercise Science	1	0	0.0	4	0	0.0	1	0	0.0	4	0	0.0
Pre-Interior Design	0			0			1	0	0.0	2	0	0.0
Pre-Nursing/Nursing	55	0	0.0	75	0	0.0	56	0	0.0	50	0	0.0
Pre-Rec/Natrl/Cultrl Res Mgt	0			0			0			2	0	0.0
Pre-Rec/Therapeutic Recreation	0			2	0	0.0	0			0		
Pre-Rec/Tourism & Commercial	0			0			1	0	0.0	0		
Pre-Sport Management	0			4	0	0.0	9	0	0.0	9	0	0.0
Pre-Sport Med/Athletic Train	42	0	0.0	42	0	0.0	22	0	0.0	10	0	0.0
Rec/Community Leisure Serv	9	8	88.9	4	3	75.0	3	3	100.0	5	3	60.0
Rec/Natrl/Cultrl Resource Mgt	9	7	77.8	6	6	100.0	7	5	71.4	5	1	20.0
Rec/Therapeutic Recreation	6	5	83.3	3	3	100.0	1	0	0.0	5	5	100.0
Rec/Tourism & Commercial	9	6	66.7	13	10	76.9	8	5	62.5	10	8	80.0
Rec/Travel & Tourism Mgt	1	0	0.0	0			0			0		
Recreation	1	0	0.0	5	0	0.0	1	0	0.0	5	2	40.0
Sport Management	55	36	65.5	64	39	60.9	56	45	80.4	58	42	72.4
Sport Management	0			1	0	0.0	0			1	0	0.0
Sports Medicine	0			1	0	0.0	2	0	0.0	0	0	
Sports Medicine/Athletic Train	4	4	100.0	8	8	100.0	5	5	100.0	7	7	100.0

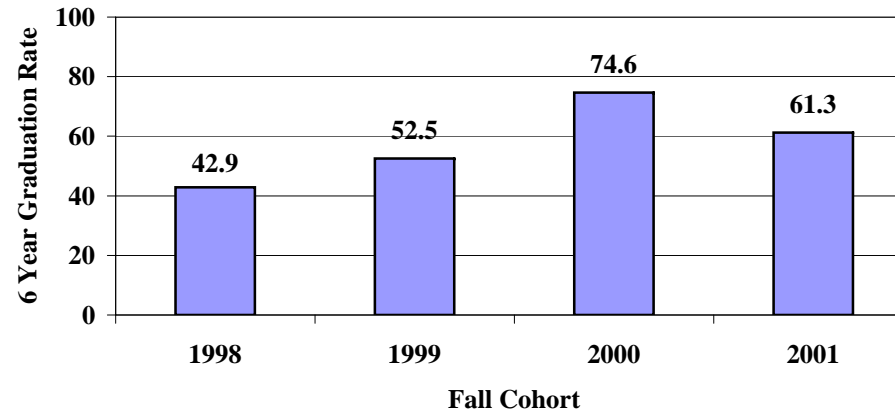
Note. Cohorts are IPEDS First-time, Full-time, Degree-seeking Freshmen. College and major are at graduation (undergraduate degree with lowest sequence number in Banner)

or at last enrollment at the undergraduate level. Source: Student Information Reporting System (SIRS) and Data Warehouse Enrollment Tables (YEN).

^{a,b} Logic was updated to utilize Banner lowest degree sequence number and to verify enrollment at the undergraduate level.

Georgia Southern University First Time Freshman Six Year Graduation Rate

College of Information Technology^c



College/Major	1998 ^a			1999 ^b			2000			2001		
	Cohort	n	%	Cohort	n	%	Cohort	n	%	Cohort	n	%
College of Information Technology^c	14	6	42.9	40	21	52.5	63	47	74.6	80	49	61.3
Computer Science	6	3	50.0	16	7	43.8	18	16	88.9	11	8	72.7
Information Technology	4	1	25.0	4	1	25.0	10	2	20.0	13	0	0.0
IT/Knowldg Mgnt & IT Integrati	0	0		1	1	100.0	2	2	100.0	2	2	100.0
IT/Systems Devel & Support	1	1	100.0	0	0		1	1	100.0	0	0	
IT/Telecomm & Network Admin	0	0		14	10	71.4	17	14	82.4	31	27	87.1
IT/Web & Multimedia Found	1	1	100.0	3	2	66.7	12	12	100.0	12	12	100.0
Pre-Computer Science	1	0	0.0	2	0	0.0	1	0	0.0	5	0	0.0
Pre-Information Technology	1	0	0.0	0	0		2	0	0.0	6	0	0.0

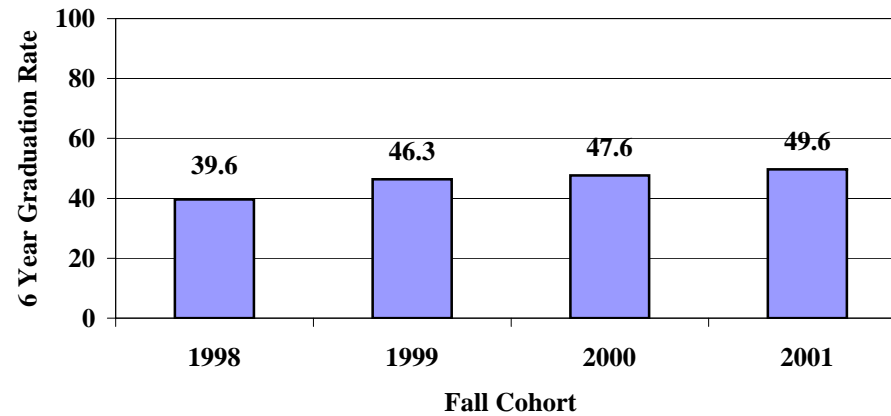
Note. Cohorts are IPEDS First-time, Full-time, Degree-seeking Freshmen. College and major are at graduation (undergraduate degree with lowest sequence number in Banner) or at last enrollment at the undergraduate level. Source: Student Information Reporting System (SIRS) and Data Warehouse Enrollment Tables (YEN).

^{a,b} Logic was updated to utilize Banner lowest degree sequence number and to verify enrollment at the undergraduate level.

^c Since enrollment for this report spans six years for each cohort, it is possible for students to be enrolled in and graduating from the College of Information Technology even though it was not established until Fall 2003.

Georgia Southern University First Time Freshman Six Year Graduation Rate

College of Liberal Arts & Social Sciences



College/Major	1998 ^a			1999 ^b			2000			2001		
	Cohort	n	%	Cohort	n	%	Cohort	n	%	Cohort	n	%
College of Liberal Arts & Social Sciences	543	215	39.6	630	292	46.3	626	298	47.6	536	266	49.6
Anthropology	7	5	71.4	9	4	44.4	13	9	69.2	10	5	50.0
Art	57	25	43.9	66	27	40.9	44	17	38.6	51	26	51.0
Broadcasting	30	15	50.0	38	24	63.2	26	22	84.6	22	17	77.3
Comm Arts/Community/Rec Theatr	1	0	0.0	0			0			0		
Comm Arts/Public Relations	2	0	0.0	2	0	0.0	0			0		
Communication Arts	8	4	50.0	10	5	50.0	27	16	59.3	8	3	37.5
Composition	1	0	0.0	1	1	100.0	0			2	2	100.0
Economics	1	1	100.0	1	1	100.0	1	0	0.0	0		
Economics/International Econ	0	0		1	1	100.0	0			1	1	100.0
English	25	10	40.0	22	12	54.5	31	20	64.5	21	13	61.9
French	0			2	2	100.0	0			2	0	0.0

continued on next page

Note. Cohorts are IPEDS First-time, Full-time, Degree-seeking Freshmen. College and major are at graduation (undergraduate degree with lowest sequence number in Banner) or at last enrollment at the undergraduate level. Source: Student Information Reporting System (SIRS) and Data Warehouse Enrollment Tables (YEN).

^{a,b} Logic was updated to utilize Banner lowest degree sequence number and to verify enrollment at the undergraduate level.

Georgia Southern University
First Time Freshman Six Year Graduation Rate

continued from previous page

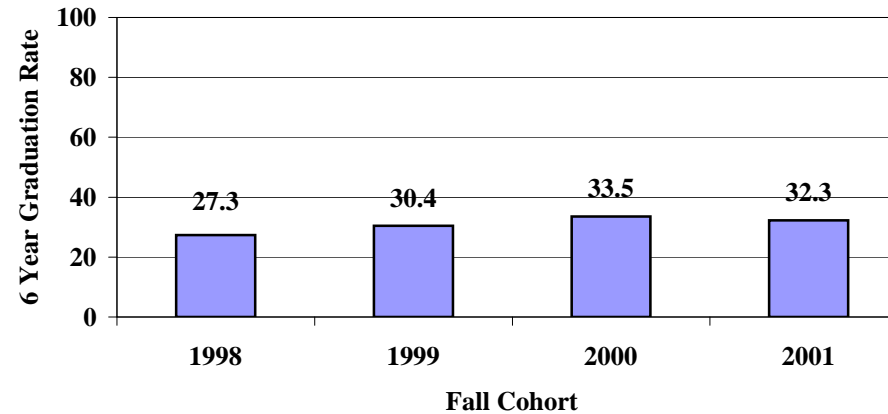
College/Major	1998 ^a			1999 ^b			2000			2001		
	Cohort	Graduated		Cohort	Graduated		Cohort	Graduated		Cohort	Graduated	
		n	%		n	%		n	%		n	%
College of Liberal Arts & Social Sciences	543	215	39.6	630	292	46.3	626	298	47.6	536	266	49.6
General Studies	0			0			0			11	3	27.3
German	1	1	100.0	1	0	0.0	0			0		
Graphic Communications Mgt	0			0			0			1	0	0.0
History	21	8	38.1	25	12	48.0	32	15	46.9	22	14	63.6
Journalism	19	3	15.8	15	10	66.7	11	8	72.7	6	4	66.7
Justice Studies	59	22	37.3	57	40	70.2	88	50	56.8	69	35	50.7
Music	4	0	0.0	6	1	16.7	1	1	100.0	2	0	0.0
Music Ed/Choral Sequence	4	2	50.0	9	3	33.3	3	1	33.3	1	0	0.0
Music Ed/Instrumental Sequence	11	1	9.1	13	4	30.8	11	6	54.5	7	4	57.1
Performance	4	0	0.0	9	3	33.3	10	4	40.0	6	2	33.3
Philosophy	6	2	33.3	5	1	20.0	2	0	0.0	9	5	55.6
Political Sci/Pre-Law	13	0	0.0	14	0	0.0	20	0	0.0	8	0	0.0
Political Science	48	18	37.5	44	21	47.7	34	17	50.0	40	18	45.0
Pre-Communication Arts	36	0	0.0	55	0	0.0	54	0	0.0	50	0	0.0
Psychology	93	36	38.7	114	43	37.7	130	48	36.9	101	52	51.5
Public Relations	51	39	76.5	62	49	79.0	47	39	83.0	54	45	83.3
Sociology	10	6	60.0	9	4	44.4	5	3	60.0	10	4	40.0
Sociology/Applied	0			1	0	0.0	1	0	0.0	0		
Sociology/Social Services	10	6	60.0	12	7	58.3	12	9	75.0	7	5	71.4
Sociology/Social Work	0			1	0	0.0	1	0	0.0	1	0	0.0
Spanish	3	2	66.7	6	1	16.7	4	4	100.0	5	4	80.0
Speech Communication	5	2	40.0	9	8	88.9	9	6	66.7	1	1	100.0
Theatre	13	7	53.8	9	6	66.7	5	2	40.0	3	1	33.3
Writing and Linguistics	0			2	2	100.0	4	1	25.0	5	2	40.0

Note. Cohorts are IPEDS First-time, Full-time, Degree-seeking Freshmen. College and major are at graduation (undergraduate degree with lowest sequence number in Banner) or at last enrollment at the undergraduate level. Source: Student Information Reporting System (SIRS) and Data Warehouse Enrollment Tables (YEN).

^{a/b} Logic was updated to utilize Banner lowest degree sequence number and to verify enrollment at the undergraduate level.

Georgia Southern University First Time Freshman Six Year Graduation Rate

College of Science & Technology



College/Major	1998 ^a			1999 ^b			2000			2001		
	Cohort	n	%	Cohort	n	%	Cohort	n	%	Cohort	n	%
College of Science & Technology	476	130	27.3	542	165	30.4	513	172	33.5	486	157	32.3
Apparel Manufacturing	0			1	0	0.0	0			0		
Biology	150	51	34.0	156	60	38.5	125	52	41.6	103	45	43.7
Blding Const & Contracting	23	6	26.1	16	0	0.0	13	0	0.0	8	0	0.0
Chem/Pre-Pharmacy	14	0	0.0	16	0	0.0	17	0	0.0	15	0	0.0
Chemistry	23	11	47.8	18	11	61.1	31	22	71.0	29	20	69.0
Chemistry/Pre-Dentistry	1	0	0.0	4	0	0.0	0			1	0	0.0
Chemistry/Pre-Medicine	1	0	0.0	4	0	0.0	5	0	0.0	1	0	0.0
Civil Engineering Tech	8	4	50.0	14	7	50.0	20	12	60.0	10	6	60.0
Computer Science	17	6	35.3	15	8	53.3	3	2	66.7	2	0	0.0
Construction Management	20	10	50.0	37	20	54.1	40	26	65.0	45	27	60.0
Electrical Engineering Tech	18	7	38.9	14	8	57.1	25	13	52.0	27	15	55.6

continued on next page

Note. Cohorts are IPEDS First-time, Full-time, Degree-seeking Freshmen. College and major are at graduation (undergraduate degree with lowest sequence number in Banner) or at last enrollment at the undergraduate level. Source: Student Information Reporting System (SIRS) and Data Warehouse Enrollment Tables (YEN).

^{a,b} Logic was updated to utilize Banner lowest degree sequence number and to verify enrollment at the undergraduate level.

Georgia Southern University
First Time Freshman Six Year Graduation Rate

continued from previous page

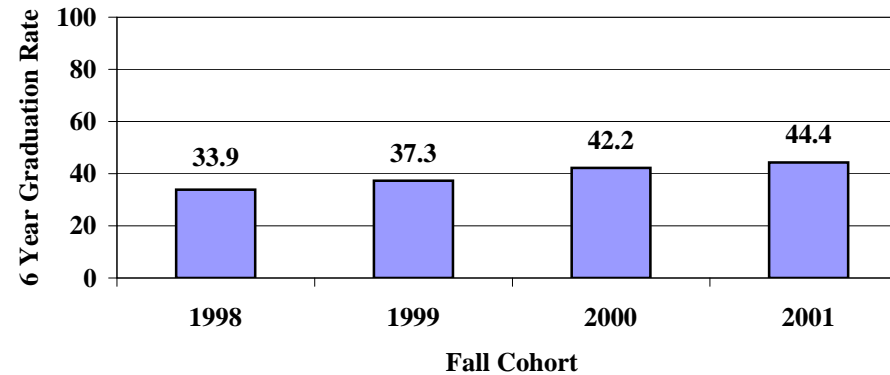
College/Major	1998 ^a			1999 ^b			2000			2001		
	Cohort	Graduated		Cohort	Graduated		Cohort	Graduated		Cohort	Graduated	
		n	%		n	%		n	%		n	%
College of Science & Technology	476	130	27.3	542	165	30.4	513	172	33.5	486	157	32.3
Geography	2	2	100.0	6	3	50.0	12	3	25.0	7	5	71.4
Geology	4	2	50.0	13	7	53.8	4	3	75.0	7	4	57.1
Graphic Communications Mgt	0			0			2	2	100.0	6	5	83.3
GTREP/Civil Engineering	1	0	0.0	0			4	0	0.0	6	0	0.0
GTREP/Computer Engineering	0			6	0	0.0	10	0	0.0	9	0	0.0
GTREP/Electrical Engineering	0			0			0			1	0	0.0
GTREP/Mechanical Engineering	0			0			0			1	0	0.0
Industrial Engineering Tech	3	1	33.3	2	0	0.0	1	0	0.0	1	0	0.0
Industrial Management	11	6	54.5	13	10	76.9	12	5	41.7	9	4	44.4
Mathematics	10	6	60.0	9	6	66.7	11	7	63.6	10	4	40.0
Mechanical Engineering Tech	19	8	42.1	11	5	45.5	24	11	45.8	27	12	44.4
Phy/Pre-Dent	3	0	0.0	0			2	0	0.0	1	0	0.0
Phy/Pre-Med	6	0	0.0	7	0	0.0	5	0	0.0	3	0	0.0
Physics	4	2	50.0	5	2	40.0	5	4	80.0	8	6	75.0
Pre-Computer Science	27	0	0.0	51	0	0.0	33	0	0.0	21	0	0.0
Pre-Forestry	3	0	0.0	0			3	0	0.0	2	0	0.0
Printing Management	17	8	47.1	27	18	66.7	14	10	71.4	10	4	40.0
Regents Engr Transfer Prg	37	0	0.0	27	0	0.0	22	0	0.0	29	0	0.0
Technology	0			3	0	0.0	1	0	0.0	1	0	0.0
Technology Options Program	1	0	0.0	6	0	0.0	48	0	0.0	55	0	0.0
Transient GTREP	5	0	0.0	23	0	0.0	21	0	0.0	31	0	0.0
Two Plus Engineer Transfer	48	0	0.0	38	0	0.0	0			0		

Note. Cohorts are IPEDS First-time, Full-time, Degree-seeking Freshmen. College and major are at graduation (undergraduate degree with lowest sequence number in Banner) or at last enrollment at the undergraduate level. Source: Student Information Reporting System (SIRS) and Data Warehouse Enrollment Tables (YEN).

^{a,b} Logic was updated to utilize Banner lowest degree sequence number and to verify enrollment at the undergraduate level.

Georgia Southern University
First Time Freshman Six Year Graduation Rate

College of Science & Technology
Less Engineering Studies Programs^c



College/Major	1998 ^a			1999 ^b			2000			2001		
	Cohort	Graduated n	%	Cohort	Graduated n	%	Cohort	Graduated n	%	Cohort	Graduated n	%
College of Science & Technology Less Engineering Studies Programs^c	384	130	33.9	442	165	37.3	408	172	42.2	354	157	44.4
Apparel Manufacturing	0			1	0	0.0	0			0		
Biology	150	51	34.0	156	60	38.5	125	52	41.6	103	45	43.7
Blding Const & Contracting	23	6	26.1	16	0	0.0	13	0	0.0	8	0	0.0
Chem/Pre-Pharmacy	14	0	0.0	16	0	0.0	17	0	0.0	15	0	0.0
Chemistry	23	11	47.8	18	11	61.1	31	22	71.0	29	20	69.0
Chemistry/Pre-Dentistry	1	0	0.0	4	0	0.0	0			1	0	0.0
Chemistry/Pre-Medicine	1	0	0.0	4	0	0.0	5	0	0.0	1	0	0.0
Civil Engineering Tech	8	4	50.0	14	7	50.0	20	12	60.0	10	6	60.0
Computer Science	17	6	35.3	15	8	53.3	3	2	66.7	2	0	0.0

continued on next page

Note. Cohorts are IPEDS First-time, Full-time, Degree-seeking Freshmen. College and major are at graduation (undergraduate degree with lowest sequence number in Banner) or at last enrollment at the undergraduate level. Source: Student Information Reporting System (SIRS) and Data Warehouse Enrollment Tables (YEN).

^{a,b} Logic was updated to utilize Banner lowest degree sequence number and to verify enrollment at the undergraduate level.

^c Engineering Studies majors excluded are GTREP, Regents Engineering Transfer Program, Two Plus Engineering Transfer, and Technology Options Program

Georgia Southern University
First Time Freshman Six Year Graduation Rate

continued from previous page

College/Major	1998 ^a			1999 ^b			2000			2001		
	Cohort	Graduated		Cohort	Graduated		Cohort	Graduated		Cohort	Graduated	
		n	%		n	%		n	%		n	%
College of Science & Technology												
Less Engineering Studies Programs^c	384	130	33.9	442	165	37.3	408	172	42.2	354	157	44.4
Construction Management	20	10	50.0	37	20	54.1	40	26	65.0	45	27	60.0
Electrical Engineering Tech	18	7	38.9	14	8	57.1	25	13	52.0	27	15	55.6
Geography	2	2	100.0	6	3	50.0	12	3	25.0	7	5	71.4
Geology	4	2	50.0	13	7	53.8	4	3	75.0	7	4	57.1
Graphic Communications Mgt	0			0			2	2	100.0	6	5	83.3
Industrial Engineering Tech	3	1	33.3	2	0	0.0	1	0	0.0	1	0	0.0
Industrial Management	11	6	54.5	13	10	76.9	12	5	41.7	9	4	44.4
Mathematics	10	6	60.0	9	6	66.7	11	7	63.6	10	4	40.0
Mechanical Engineering Tech	19	8	42.1	11	5	45.5	24	11	45.8	27	12	44.4
Phy/Pre-Dent	3	0	0.0	0			2	0	0.0	1	0	0.0
Phy/Pre-Med	6	0	0.0	7	0	0.0	5	0	0.0	3	0	0.0
Physics	4	2	50.0	5	2	40.0	5	4	80.0	8	6	75.0
Pre-Computer Science	27	0	0.0	51	0	0.0	33	0	0.0	21	0	0.0
Pre-Forestry	3	0	0.0	0			3	0	0.0	2	0	0.0
Printing Management	17	8	47.1	27	18	66.7	14	10	71.4	10	4	40.0
Technology	0			3	0	0.0	1	0	0.0	1	0	0.0

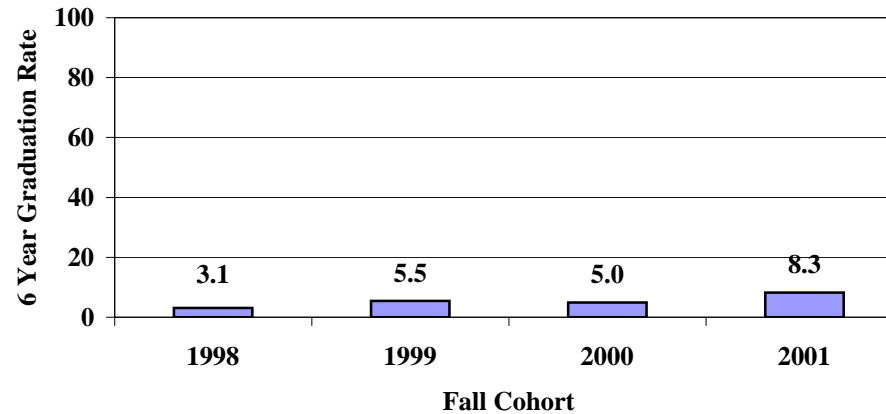
Note. Cohorts are IPEDS First-time, Full-time, Degree-seeking Freshmen. College and major are at graduation (undergraduate degree with lowest sequence number in Banner) or at last enrollment at the undergraduate level. Source: Student Information Reporting System (SIRS) and Data Warehouse Enrollment Tables (YEN).

^{a,b} Logic was updated to utilize Banner lowest degree sequence number and to verify enrollment at the undergraduate level.

^c Engineering Studies majors excluded are GTREP, Regents Engineering Transfer Program, Two Plus Engineering Transfer, and Technology Options Program

Georgia Southern University First Time Freshman Six Year Graduation Rate

Office of the Provost



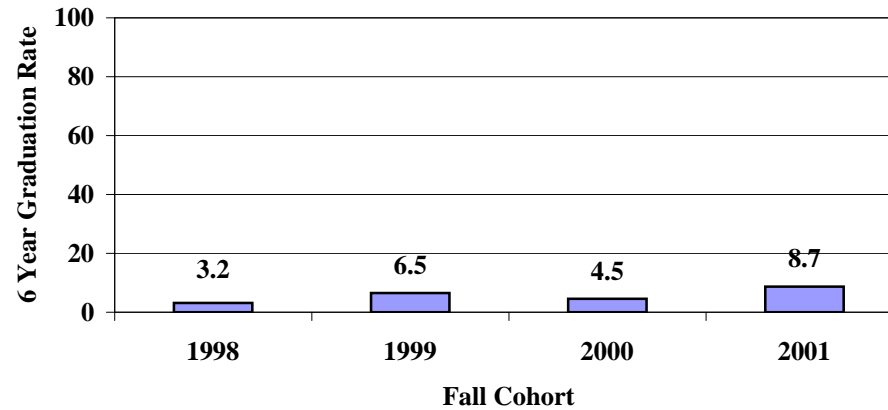
College/Major	1998 ^a			1999 ^b			2000			2001		
	Cohort	n	%	Cohort	n	%	Cohort	n	%	Cohort	n	%
Office of the Provost	413	13	3.1	382	21	5.5	323	16	5.0	278	23	8.3
East GA Transient	1	0	0.0	1	0	0.0	0			0		
Economics/International Econ	2	1	50.0	0			0			0		
General Studies	14	7	50.0	20	12	60.0	26	13	50.0	12	9	75.0
International Studies	5	2	40.0	7	5	71.4	5	2	40.0	16	10	62.5
International Trade	7	3	42.9	7	4	57.1	5	1	20.0	6	4	66.7
Transient GTREP	1	0	0.0	0			0			0		
Transient-Undergraduate	2	0	0.0	1	0	0.0	0			2	0	0.0
Undeclared	381	0	0.0	346	0	0.0	287	0	0.0	242	0	0.0

Note. Cohorts are IPEDS First-time, Full-time, Degree-seeking Freshmen. College and major are at graduation (undergraduate degree with lowest sequence number in Banner) or at last enrollment at the undergraduate level. Source: Student Information Reporting System (SIRS) and Data Warehouse Enrollment Tables (YEN).

^{a,b} Logic was updated to utilize Banner lowest degree sequence number and to verify enrollment at the undergraduate level.

**Georgia Southern University
First Time Freshman Six Year Graduation Rate**

Office of the Provost **Less Learning Support^c**



College/Major	1998 ^a			1999 ^b			2000			2001		
	Cohort	n	%	Cohort	n	%	Cohort	n	%	Cohort	n	%
Office of the Provost Less Learning Support^c	250	8	3.2	246	16	6.5	221	10	4.5	264	23	8.7
Economics/International Econ	2	1	50.0	0	0		0	0		0	0	
General Studies	7	4	57.1	10	7	70.0	19	8	42.1	12	9	75.0
International Studies	4	1	25.0	6	5	83.3	5	2	40.0	16	10	62.5
International Trade	4	2	50.0	7	4	57.1	4	0	0.0	5	4	80.0
Transient GTREP	1	0	0.0	0	0		0	0		0	0	
Transient-Undergraduate	1	0	0.0	1	0	0.0	0	0		2	0	0.0
Undeclared	231	0	0.0	222	0	0.0	193	0	0.0	229	0	0.0

Note. Cohorts are IPEDS First-time, Full-time, Degree-seeking Freshmen. College and major are at graduation (undergraduate degree with lowest sequence number in Banner) or at last enrollment at the undergraduate level. Source: Student Information Reporting System (SIRS) and Data Warehouse Enrollment Tables (YEN).

^{a,b} Logic was updated to utilize Banner lowest degree sequence number and to verify enrollment at the undergraduate level.

^c Learning Support Status is at matriculation.