

Georgia Southern University
LEVEL II University Implementation Plan

ORGANIZATIONAL PLAN

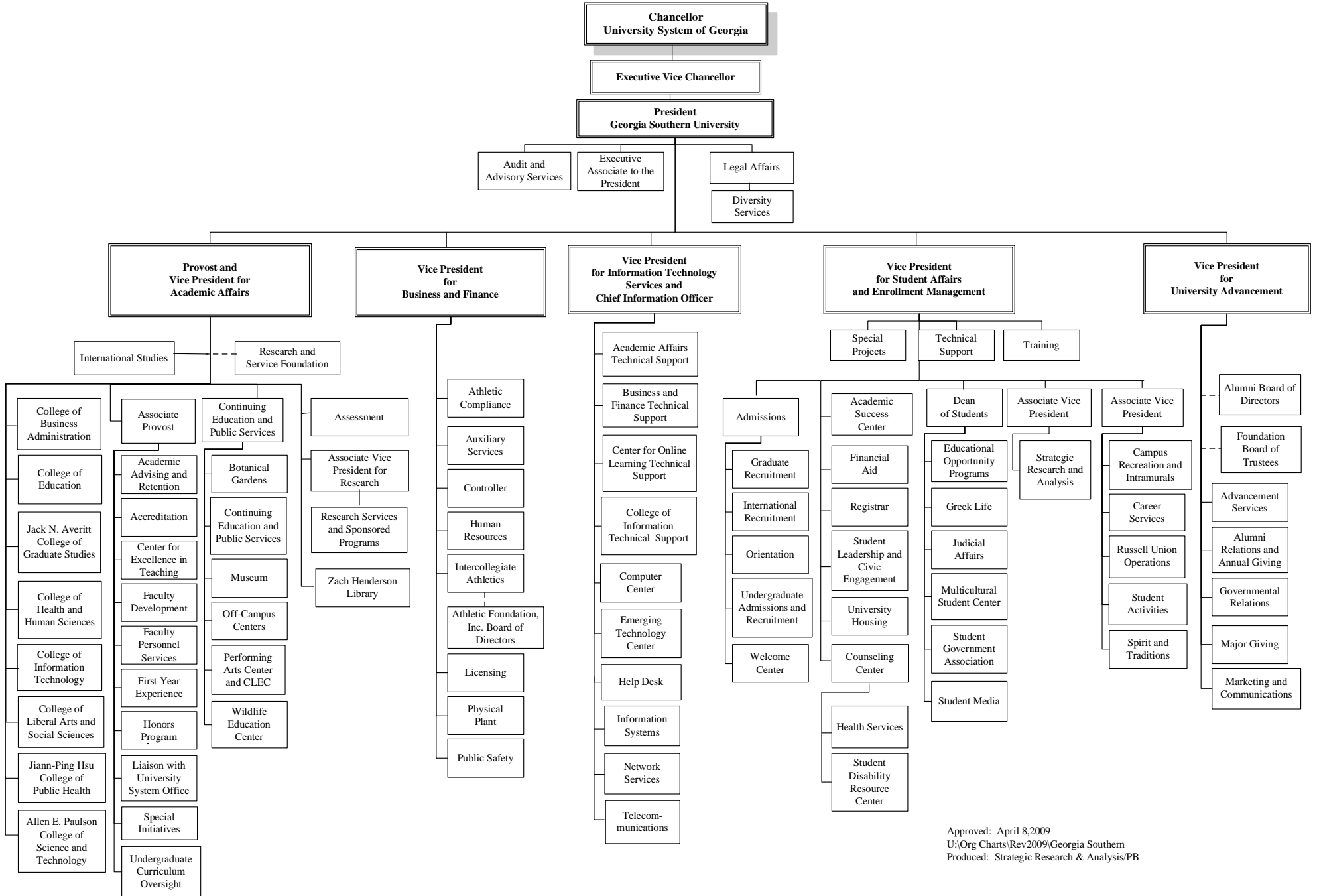
Revised by the President's Cabinet
in Cooperation with the Strategic Planning Council

Spring 2009

INTRODUCTION

The Organizational Structure for Georgia Southern University is reviewed and updated annually by the President's Cabinet. The following charts reflect the University's structure for the fiscal year 2009.

**Georgia Southern University
Organization Chart 2008-2009**



Approved: April 8, 2009
 U:\Org Charts\Rev 2009\Georgia Southern
 Produced: Strategic Research & Analysis/PB

**Georgia Southern University
Office of the President
Organization Chart 2008-2009**

**Chancellor
University System of Georgia**

Executive Vice Chancellor

**President
Georgia Southern University**

**Audit and
Advisory Services**

**Executive Associate
to the President**

**Legal
Affairs**

Diversity Services

**Provost and
Vice President for
Academic Affairs**

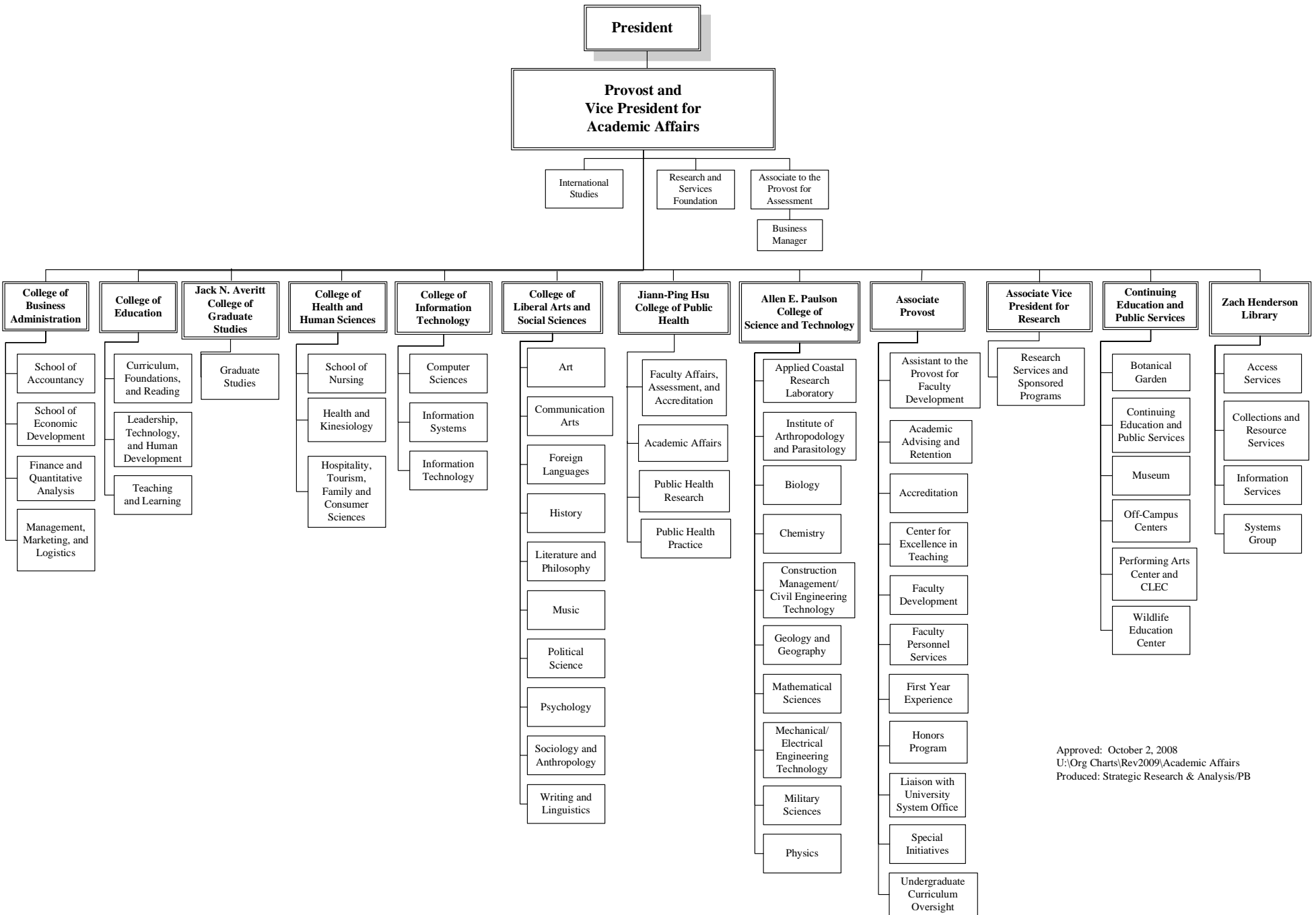
**Vice President
for
Business and Finance**

**Vice President
for Information Technology
Services and
Chief Information Officer**

**Vice President
for Student Affairs and
Enrollment Management**

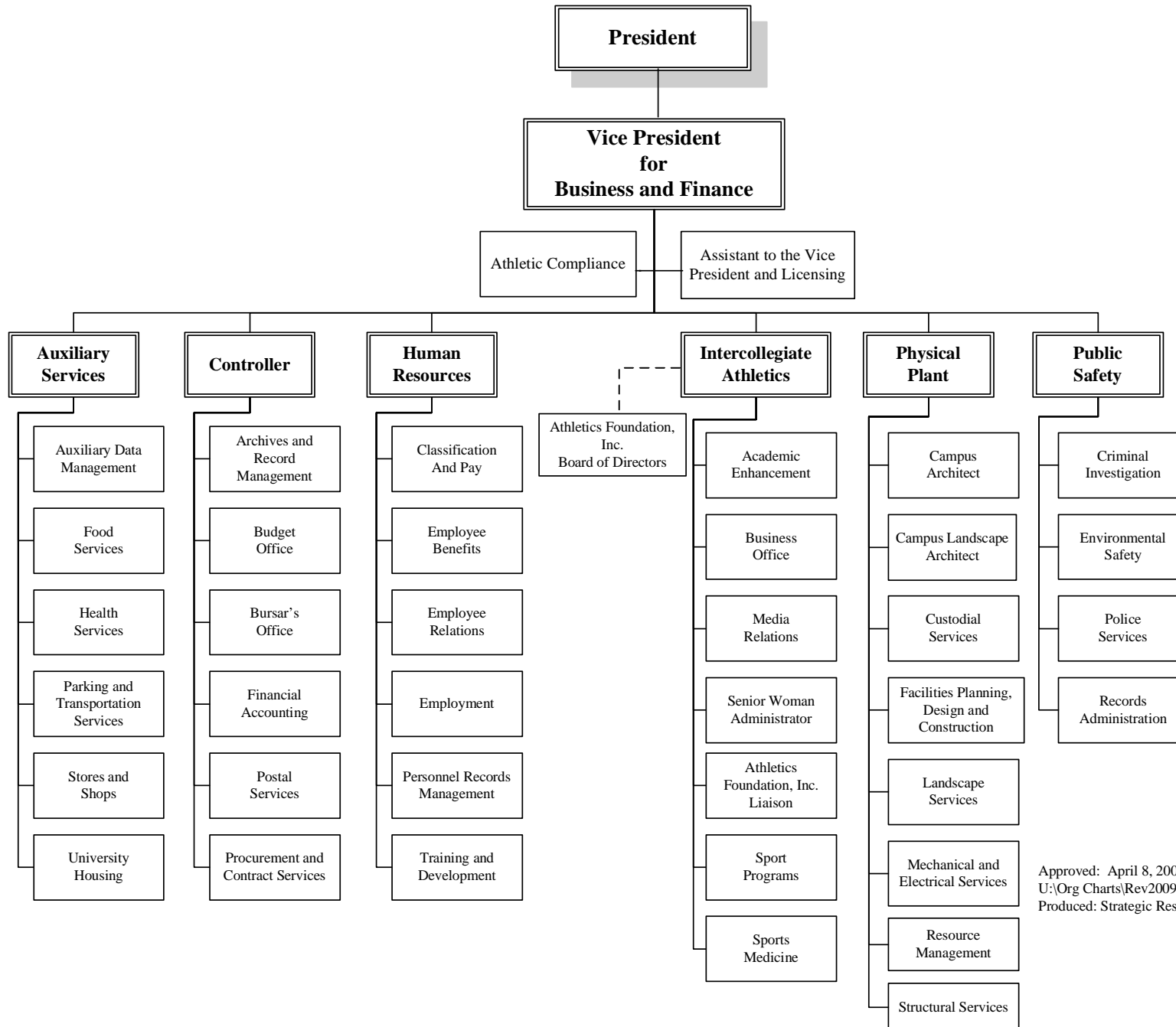
**Vice President
for
University Advancement**

**Georgia Southern University
Academic Affairs
Organization Chart 2008-2009**



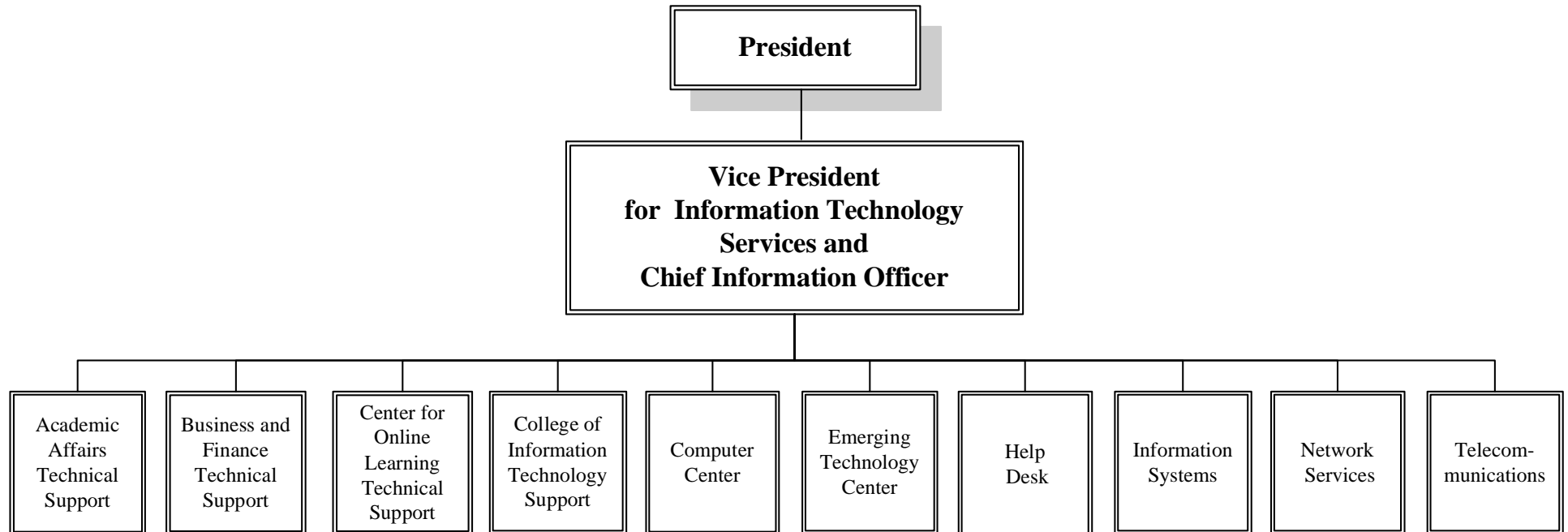
Approved: October 2, 2008
 U:\Org Charts\Rev2009\Academic Affairs
 Produced: Strategic Research & Analysis/PB

**Georgia Southern University
Business and Finance
Organization Chart 2008-2009**

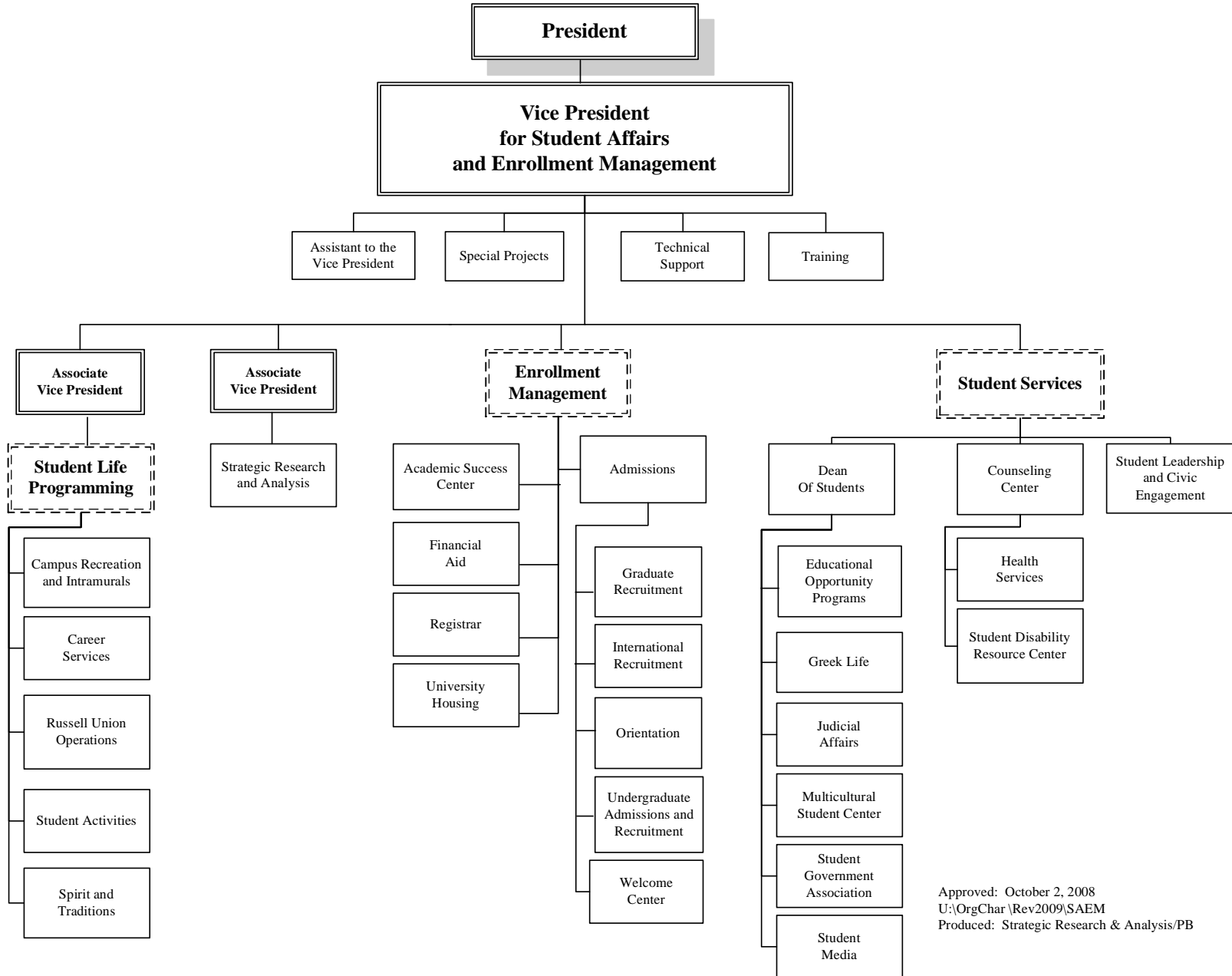


Approved: April 8, 2009
 U:\Org Charts\Rev2009\Business & Finance
 Produced: Strategic Research & Analysis/PB

**Georgia Southern University
Information Technology Services
Organization Chart 2008-2009**



**Georgia Southern University
Student Affairs and Enrollment Management
Organization Chart 2008-2009**



Approved: October 2, 2008
 U:\OrgChar \Rev2009\SAEM
 Produced: Strategic Research & Analysis/PB

Note: The dashed boxes do not represent formal organizational units, but rather, functional titles of the groups of units.

Georgia Southern University
University Advancement
Organization Chart 2008-2009

